



eBIT400

Administrator Manual

Version 8 Release 0

eBIT400

Administrator manual

Version 8 Release 0

Third Edition (March 2011)

This edition corresponds to version 8, release 0 of eBIT400 Software and all subsequent releases and modifications until otherwise indicated in new editions. This edition is for the Administrator's Guide application.

Bit ON CONSULTORES, S.L.
C/Pere IV, 29-35
08018-BARCELONA (España)

Telephone : +34 933 008 760
Fax: +34 933 569 658
E-mail: soporte@biton.es
Web: <http://www.biton.es/>

© Copyright Bit ON Consultores, S.L. 2009. All rights reserved.

© ESKER DELIVERY WARE copyright 1990-2004
ESKER IBERICA All rights reserved. <http://www.esker.com>

© iText Library - Copyright (C) 1999-2005 by Bruno Lowagie and Paulo Soares. All Rights Reserved.
<http://www.lowagie.com/iText/>

Reproduction, copying, modification, public communication, distribution and any other transfer of this program without the authorization of exploitation rights is a crime against intellectual property referred to in Article 534 bis of the Criminal Code section.

LICENCE AGREEMENT

IMPORTANT - READ CAREFULLY

This License Agreement for the end user is a legal agreement between you (an individual or an entity) and Bit ON Consultores, SL for eBIT400 software product, which includes software, related media and printed materials, and documentation may include "online" or electronic documentation ("SOFTWARE PRODUCT" or "SOFTWARE"). By installing, copying or otherwise using the SOFTWARE PRODUCT, you agree to be bound by the terms of this License Agreement. If you do not agree with the terms of this License Agreement, promptly return the unused SOFTWARE PRODUCT to the place of purchase for the purpose of a full refund of the amount paid. The terms listed in the paper copy of this License Agreement replace the terms of any License Agreement "online" or included in the SOFTWARE PRODUCT.

SOFTWARE PRODUCT LICENSE

The SOFTWARE PRODUCT is protected by copyright laws and international treaties on copyright and other laws and treaties on intellectual property. The SOFTWARE PRODUCT is licensed, not sold.

1. GRANT OF LICENSE. This License Agreement grants you the following rights:

- **Software.** You may install and use one copy of the SOFTWARE PRODUCT on a single computer. If the SOFTWARE PRODUCT can be installed on an IBM iSeries, any number of workstations may access or otherwise use the services of the SOFTWARE PRODUCT.

Storage / use on a network. May store or install a copy of the SOFTWARE PRODUCT on a storage device such as a network server, which is used only to install or run the SOFTWARE PRODUCT. However, you must acquire and assign a license for each IBM iSeries that is installed or run the SOFTWARE PRODUCT from the storage device. A license for the SOFTWARE PRODUCT may not be shared or used concurrently on different IBM iSeries.

License Package. If you acquired this License Agreement on a package of license Bit ON Consultores, SL, may make the quantity of additional copies of the SOFTWARE PRODUCT software authorized printed copy of this License Agreement.

2. DESCRIPTION OF OTHER RIGHTS AND LIMITATIONS

Limitations on Reverse Engineering, Decompilation, and Disassembly. You may not use reverse engineer, decompile or disassemble the SOFTWARE PRODUCT unless such activity is expressly permitted by applicable law notwithstanding this prohibition.

Separation of components. The SOFTWARE PRODUCT is licensed as a single product. The component parts may not be separated for use on more than one computer.

Rental. It is not rent or lease the SOFTWARE PRODUCT.

Software Transfer. All rights granted by this License Agreement may be transferred permanently to the condition that they retain no copies, you transfer the entire SOFTWARE PRODUCT (including all components, media and printed materials, any updates, the This License Agreement and, if applicable, the Certificate of Authenticity) and the recipient agrees to the terms of this License Agreement. If the SOFTWARE PRODUCT is an upgrade, any transfer must include all previous versions of the SOFTWARE PRODUCT.

End of contract. Without prejudice to any other right, Bit ON Consultores, SL may terminate this License Agreement if you fail to comply with the terms and conditions. In that case, you must destroy all copies of the SOFTWARE PRODUCT and all its components.

3. UPDATES. If the SOFTWARE PRODUCT is an upgrade from another product, whether Bit ON Consultores, SL or other provider, you can only use or transfer the SOFTWARE PRODUCT along with the upgraded product, unless you destroy the upgraded product. If the SOFTWARE PRODUCT is an upgrade of Bit ON Consultores, SL, the update will only be used in accordance with the terms of this

License Agreement. If the SOFTWARE PRODUCT is an upgrade of a component of a package of software programs on which you licensed as a single product, the SOFTWARE PRODUCT may be used and transferred only as part of that single product package and may not be separated to be used in more than one computer.

4. **COPYRIGHT.** All title and copyrights in the SOFTWARE PRODUCT (including, without limitation, images, photographs, animated figures, video, audio, music, text and "applets ", incorporated into the SOFTWARE PRODUCT), the printed materials accompany it and other copies of the SOFTWARE PRODUCT are owned by Bit ON Consultores, SL or its suppliers. The SOFTWARE PRODUCT is protected by copyright laws and international treaty provisions. You may not copy the printed materials accompanying the SOFTWARE PRODUCT. Therefore, you must treat the SOFTWARE PRODUCT like any other material subject to copyright, except that you can (a) make a copy of the SOFTWARE PRODUCT solely for backup purposes (backup) or file, or (b) install the SOFTWARE PRODUCT on a single computer provided you keep the original solely for backup purposes or archive. You may not copy the printed materials accompanying the SOFTWARE PRODUCT.

5. **DUAL MEDIA SOFTWARE.** You may receive the SOFTWARE PRODUCT in more than medium. Regardless of the type or size of medium you receive, you can only use the medium that is appropriate for IBM iSeries. You may not use or install the other medium on another computer. The additional means may not be lent, hired, leased or otherwise transferred to another user except as part of the permanent transfer (as provided above) of the SOFTWARE PRODUCT.

Special comments

The references made in this publication to products, programs or services Biton CONSULTANTS, SL not imply that Biton CONSULTANTS, SL intends to distribute and market them in all computing environments in which software is developed. Any references in this publication to products, programs or services Biton CONSULTANTS, SL does not imply that one can use programs or services Biton CONSULTANTS, SL Product, program or service whose function does not infringe intellectual property rights can be used in place of the product, program or service Biton CONSULTANTS, SL Evaluation and verification of operation in conjunction with other products, except those expressly designated by Biton CONSULTANTS, SL, is the responsibility of user.

This information may contain technical inaccuracies or typographical errors.

This manual may refer to products advertised but not available. This manual may refer to products that have not been announced in your country. Should not be construed Biton CONSULTANTS, SL intends to make available any advertised product referenced here. The final decision to announce any product is based on technical and commercial decision Biton CONSULTANTS, SL.

This manual contains examples of data and reports used in daily business operations. To illustrate them as completely as possible, include the names of individuals, companies, brands and products. All these names are fictitious and any similarity to the names and addresses used by companies today is entirely coincidental.

CONTENT

eBIT400 Main Menu

- How to access Main Menu 10
 - Components of User menu 11
 - Components of Administrator menu 12

eBIT400 Subsystem

- Jobs in eBIT400 subsystem 14
 - AJPE supplied 15
 - JOBQs supplied 15
 - JOBDs supplied 15
 - Clases supplied 16
 - Start/Stop eBIT400 subsystem 16

eBIT400 users

- Managing users 17

eBIT400 Servers/Modules

- Managing Servers/Modules 26
- eBIT400 Main modules 32

Working with eBIT400 Documents

- Working with Documents 42
- Cancel the sending of a document 48
- View a Document 48
- Forward a Documento 49
 - Forward a Fax 50
 - Forward an eMail 52
 - Forward an Archive 54
- Expand document information 55
- Forward an eMail by fax 56

Working with OUTQs

- Working with output queues 59

Working with configuration

- Working with configuration 63
- eBit400 parameters 65

Working with Digital Signatures

- Working with Digital Signatures 72

Working with Dossiers

- Working with Dossiers 78

Working with Templates

- Working with Templates 82

Working with spools

Sending a spool manually

- How to send a spool manually 89
 - Sending a spool by fax. 89
 - Sending a spool by eMail..... 91
 - Sending a spool by Archive 92

Sending a spool automatically

- Sending a spool using embedded codes 96
 - Embedded codes allowed 98
- Sending a spool using *USRDFNDDTA* 105
- Sending a spool to several recipients Fax/eMail/Archive 106

5761 IP1-IBM Infoprint Server for iSeries

- Setup for eBIT400 107
- Sending spools *SCS, *AFPDS & *IPDS manually 107
- Sending spools *SCS, *AFPDS & *IPDS using *USRDFNDDTA*..... 107
- Sending spools *SCS, *AFPDS & *IPDS using *SNDCOLSPLF* 107

5761 TS1-IBM Transform Services for i5/OS

- How to generate a PDF 108
- How to send a PDF generate with eBIT400 108

Tools

- How to initialize *eBIT400* database 110
- How to install and use overlay (*AFPDS)..... 110
 - Setup IBM AFP printer 111
 - Creating overlay 111
 - Printing a test spool in IBM i 111
- How to setup a backup..... 112

COMMANDS supported

- **CHGCMDDFT**, Change default values 115
- **CRTEBOUTQ**, Create a printer to format spools using Crystal Reports 116
- **SNDCOLSPLF**, Send a spool by fax, eMail, Archivaldo 117
- **SNDEBFAX**, Send a FAX 122
- **SNDEBMAIL** , Send an eMail 125
- **SNDEBSMS**, Send a SMS 128
- **SNDEBSPLF**, Send spool(s) by fax, eMail, Archive 130
- **WRKBIDOCs** Working with documents 139
- **WRKBISPLF** , Working with spools 141

Troubleshooting

- Documents are not processed correctly 142
- Spools are not sent automatically 145

About eBIT400

This manual is intended to provide sufficient information about eBIT400 Software release Version 8 0 so that the user can find access to the APIs provided and the effective operation and management of this.

Who should read this Manual

This publication is designed for advanced technical professionals in using the IBM i Operating System if you have programming skills much better.

Before using eBIT400 be sure you have followed the steps in the product installation (see Installation and Commissioning of eBIT400).

How to send your comments

Your feedback is important for us. If you, have any comments about this manual, please fill out the form on the last page.

- If you, prefer to send comments by FAX, use either of the following numbers:
 - From Spain : 933-569-658
 - From other countries : +34 933-569-658
- If you prefer to send their comments via e-mail, use this address:

soporte@biton.es

Be sure to include the following information:

- Manual's name
- Product version
- The number of page for your comments.

eBIT400 Menu

This chapter first explains how to access the application using eBIT400. It also explains the main application menu with the options that make it up.

From the main menu eBIT400, the user can access all the tasks that compose the application, including those tasks that can work together with the application.

In this chapter

- How to access Main menu.
- Options in User menu.
- Options in Administrator menu.

How to access Main menu

To access eBit400 main menu, from any command line of your computer screen, type the following command:

GO EBIT/EBIT400 + Intro

Warning: For the above command works correctly and access the application, it is not necessary to add EBIT library into the list of libraries. Is automatically added.

EBIT400 menu lets you select the task to perform. To select a menu option, enter the number of the chosen option and press Enter.

To run a command, type it in the command line and press Enter. For assistance when typing a command, type it and press the F4 function key. To retrieve the last command entered, press the F9 function key. To go to another menu, use the GO command followed by the name of the menu you want to access. For example to enter the menu to work with tapes: GO TAPE.

EBIT400 users have access to each of the main menu options have been approved on the basis of whether they are administrators of the system (* SECADM, * SECOFR) or not (* USER, * SYSOPR, * PGMR, ...). If a user is not authorized to attempt a menu option to access the same will continue in the main menu.

To end the application and complete the work session can select 90.

User Menu

User menu allows you to manage and control all eBIT400 application configuration. Only have access to the User menu eBIT400 users that are configured on the EBIT400 user option or are the type * USER or * SYSOPR.

```

EBIT400                eBIT400 Soluciones de negocio para IBM i                Sistema:  S653E862
Seleccione una de las siguientes opciones :

Administración

Tareas
 10. Trabajar con Documentos
 11. Trabajar con spools

 90. Finalizar la sesión

Selección o mandato      (C) Copyright BitON Consultores, S.L.                Final
==> _

F3=Salir  F4=Solicitud  F9=Recuperar  F12=Cancelar
(C) Copyright BitON Consultores, S.L. 2009.
  
```

User menu elements

Once you already have the main menu screen, you can select any of the options available in the same (provided you have permission to do so).

eBIT400 menu options are:

Trabajar con Documentos

This option allows you to work with all documents stored in the system folder eBIT400. In this menu option you can work with documents, sent and received. Another way to access this option is running the command EBIT / WRKBIDOCs.

Trabajar con spools (o listados)

You can send either by fax, email or archive any spool or listing that is owned or is authorized in the IBM i. Using this option will allow you to easily select any list and can send in any output format (Pdf, Tif, Html, Rtf, Txt or xls) via eMail, fax (if available in this module) and / or archiving. Another way to access this option is running the command EBIT / WRKBISPLF.

Finalizar la sesión

This option ends the user's session and performs a signoff from the display station.

Administrator Menu

Administrator menu allows to manage and control all eBIT400 application configuration.

Only have access to the Administrator menu eBIT400 users who are assigned the category of system administrator in the user option eBIT400 and are of the type * SECADM o * o * SECOFR PGMR.

```

EBIT400                eBIT400 Soluciones de negocio para IBM i                Sistema:  S653E862
Seleccione una de las siguientes opciones :

Administración
  1. Trabajar con descr. subsistema EBIT400
  2. Trabajar con estado del subsistema EBIT400
  3. Arrancar subsistema EBIT400
  4. Parar    subsistema EBIT400

  7. Crear cola remota para formateo

Tareas
 10. Trabajar con Documentos
 11. Trabajar con spools
 12. Trabajar con Outqs
 13. Trabajar con Configuración
 14. Trabajar con Usuarios
 15. Trabajar con Servidores
 16. Trabajar con Firmas digitales
 17. Trabajar con Expedientes
 18. Trabajar con Plantillas

 90. Finalizar la sesión

 99. Trabajar con DEBUGs

Selección o mandato      (C) Copyright BitON Consultores, S.L.
==> _

F3=Salir  F4=Solicitud  F9=Recuperar  F12=Cancelar

Final

MÁ  A      MW      21/007
1391 1002 - Sesión iniciada satisfactoriamente      IBM Generic InfoPrint 600dpi AFP activa FILE

```

Administrator menu elements

Administrator menu has this options:

Trabajar con descr. Subsistema EBIT400

To manage EBIT/EBIT400 subsystem.

Trabajar con estado del Subsistema EBIT400

To check EBIT/EBIT400 subsystem.

Arrancar Subsistema EBIT400

To start EBIT/EBIT400 subsystem.

Parar Subsistema EBIT400

To end EBIT/EBIT400 subsystem.

Crear cola remota para formateo

To create remote queue against Esker's server to format spools using Crystal Reports.

Trabajar con Documentos

This option allows you to work with all documents stored in the system folder eBIT400. In this menu option you can work with documents, sent and received. Another way to access this option is running the command EBIT / WRKBIDOCs.

Trabajar con spools (o listados)

You can send either by fax, email or archive any spool or listing that is owned or is authorized in the IBM i. Using this option will allow you to easily select any list and can send in any output format (Pdf, Tif, Html, Rtf, Txt or xls) via eMail, fax (if available in this module) and / or archiving. Another way to access this option is running the command EBIT / WRKBISPLF.

Trabajar con Outqs

This option allows you to create, modify or delete eBIT400 Outqs.

Trabajar con Configuración

This option allows you to create, modify or delete application settings that are configured by default: spool format to send by email, days to maintain the log, body text of items of mail by default, debug record for internal audits, etc.

Trabajar con Usuarios

This option allows you to create, modify or delete users who will be able to use the platform.

Trabajar con Servidores

This option allows you to create, modify, or delete servers connected to IBM i. Also monitors the status of the servers: if they are enabled or disabled.

Trabajar con Firmas digitales

This option allows you to create, modify or delete digital signatures that is used for signature on PDFs.

Trabajar con Expedientes

This option lets you create, modify or delete records that can be used to store documents in eBIT400 document manager.

Trabajar con Plantillas

This option allows you to create, modify or delete templates used for sending documents, graphics, GDR rules, ...

Finalizar la sesión

This option ends the user's session and performs a signoff from the display station.

Trabajar con Debugs

This option displays log entries that technical staff from Biton uses to detect possible bugs and problems.

EBIT400 subsystem

This chapter details all the issues referred to objects related to the subsystem provided by the platform, called EBIT400.

The subsystem is responsible for starting the work necessary for the functioning eBIT400 platform.

In this chapter

- Working with EBIT400 subsystem.
- Job entry programs (PJE).
- Job Queues (JOBQs).
- Job Descriptions (JOBDS).
- Classes (CLS).
- How to start/stop subsystem.

Working with EBIT400 subsystem

Jobs that are responsible for the operation of various devices in the application run within the library subsystem EBIT400 EBIT.

EBIT400 is the subsystem within the IBM i in charge for all enforcement (process documents generated by the User, retrieve and process the spool file output queue EBIT / SND, etc).

EBIT400 subsystem can be started either from a command line and using the command: STRSBS EBIT/EBIT400 or incorporating it in the startup program for the IBM i (System value OSTRUPPGM).

PJEs provided

EBIT400 subsystem has two program job entries, which are responsible at the moment of starting the subsystem, starts all jobs necessary for the proper functioning of the application eBIT400.

Entries are as follows:

1. MAIN_OUTQS

Program in charge of capture spools in outqs defined by the administrator. Uses JOBQ SPOOLS and class SPOOLS.

2. STRJAVA

Program in charge of start JVM (Java Virtual Machine) with all the threads needed to establish communication between IBM i and ESKER servers using Webservices. Uses JOBQ EBIT400 and class EBIT400.

JOBQs provided

EBIT400 subsystem has four Job Queues (MAIN, SPOOLS, T4139P80 and BACKUPS) to manage internal jobs, according to the priority of each one wishes to establish. Each job queue allows only one job entry, except the tail SPOOLS configured by default has five possible entries. This Job Queue displays the number of spools that allows the platform to retrieve and process eBIT400 time. If you want to enlarge or reduce the number of inputs is a responsibility of the Administrator. To change the quantity is necessary to execute the command:

```
CHGJOBQE SBS(EBIT/EBIT400) JOBQ(EBIT/SPOOLS) MAXACT(xx)
```

JOBDS provided

EBIT400 subsystem has four job description (EBIT400, SPOOLS, T4139P80 and BACKUPS) to manage jobs to be submitted in each of the subsystem job queues EBIT400.

CLASSES provided

EBIT400 Subsystem has two classes (EBIT400 and SPOOLS) to manage the priority of each job submitted to each of the subsystem job queues EBIT400.

To start EBIT400 subsystem

See chapter COMMANDS IMPLEMENTED, STRSBS EBIT/EBIT400

To stop EBIT400 subsystem

See chapter COMMANDS IMPLEMENTED, ENDSBS EBIT400

eBIT400 Users

This chapter details all the issues that concerns the security of the application and incorporation and maintenance of the administrators and users. eBIT400 to define one or more administrators of the platform.

The system administrator is the user that controls and manages all configuration and operation of the application. You have permission to manage all documents from all users.

The system administrator is who can create, modify and delete users from the application. It is recommended that at the beginning of the installation, your system administrator has a security officer authorization profile level (QSECOFR profile is included in the application at the time of installation).

EBIT400 user are those who make use of the application but not administrators. The application users may have different categories and that some users may have more rights than others, and authorizations on the agenda recipients or distribution lists. You can define that a user does not have access to anything that is not strictly his or define a user, for example, access to other users in your department, and thus may also consult the papers of their peers but not of the whole company staff.

In this version of eBIT400 is not necessary that the user has to be defined in the application to make use of it. It uses defaults values.

In this chapter

- Working with users.
- Aadd a new user.
- Modify an user.
- Copy an user.
- Delete an user.
- Grant rights to an user.

Working with users

Working with user option allows you to access the screen from which you can view all users and administrators eBIT400. Once at that screen, you can add new, modify or delete existing.

User option only can access system administrators.

How to access to manage users

1. From eBIT400 main menu.
Select option 14 (Trabajar con USUARIOS).
2. You will see a screen similar this one:

```

Trabajar con Usuarios eBIT400

Tecle opciones, pulse Intro.
  1=Añadir    2=Cambiar    3=Copiar    4=Eliminar    5=Ver

   Perfil
Opc Usuario          Descripción          Emp Supervisor
-  ----- (F4)
-  EBIT              Administrador eBIT400      DFT      Si
-  QPGMR
-  QSECOFR           Administrador IBM i        DFT      Si
-  SBENACH           DFT                        DFT      Si

Final

F3=Salir    F5=Actualizar

```

From this screen you can to register new users, modify attributes of existing users and delete users.

In this first splash screen shows for each user of the same description.

Specifications	Meaning
Opc.	Field to introduce option choose.
Usuario	Show user perfil (*USRPRF).
Descripción	Show description specified in the system (WRKUSRPRF).
Empresa	Show company assigned by default (table EBIT/BTEMPRESA).

Supervisor Inform if the user is Administrator in **eBIT400**.

The menu options can be used are discussed in the following table.

Menu Option	Its used to . . .
1=Nuevo	Used to include a user to be able to use the platform eBIT400. It is mandatory to specify a user profile name exists on the iSeries system. If you know the name of the user profile to be allowed to register to use the F4 function key to display a list of all users of the iSeries system. BE CAREFUL: Don't confuse iSeries users with eBIT400 application users. The first refers to all users who are part of the IBM System i and do not necessarily have to be defined in the application. The latter refers to users who themselves are eBIT400 application and which have to be users of the IBM System i.
2=Cambiar	To change user configuration.
3=Copiar	To copy attributes from one user to other.
4=Eliminar	To delete an user from eBIT400 application.
5=Ver	To show all user attributes.

Possible function keys can be used, are described in the table below.

Function key	Its used to . . .
F3=Salir	Ends the current task and returns to the screen from which you started the task.
F5=Actualizar	Refresh information in actual screen.

Add an user

First, we will explain how to register for a user to be able to use the platform as eBIT400 and enter data in the settings so that it can make use of application tools.

To add a new user in eBIT400

1. From "Trabajar con usuarios" menu, select option 1, enter the user name to be added or if you don't know the name you can press the F4 key to pop a list of users defined in the System , allowing you to select one of them.

After entering or selecting the User Profile to add, a second screen appears to detail personalized information for the user. The screen is as follows:

```

                Usuario eBIT400

Teclee elecciones, pulse Intro.
Perfil Usuario. . BITONUSU
Descripción . . . bitonusu
Empresa . . . . . DFT
Administrador . . 0 1=Si, 0=No
eMail From . . . @

Plantilla . . . .
Departamento . . DEP
Idioma . . . . . ES
Linea fax dft . . 000000000
Firma electrónica
Cover fax . . . .
Notificar . . . . *FINAL *FINAL, *ERROR, *NEVER
Tipo notificac. . EMAIL, FAX, SMS
Notificar a email @

Comprimir adjunt. 0 1=Si, 0=No Editor: 0 0=Intermedio, 1=Básico
Permis eMail . . 1 FAX: 1 SMS: 0 Archivado: 0 GDR: 0 ISP: 0

F12=Cancelar -INTRO para aplicar cambios
    
```

In this screen you have to enter all the settings that define what kind of permissions and user rights is within the application eBIT400.

Pressing Enter, appears another screen with more data (see below), basically related with notifications.

Field	Its used to . . .
Perfil de Usuario	Specifies the name of the user.
Descripción	Specifies user description.
Empresa	Specifies company assigned to the user. Possible values are: Empresa Company code to assign to the user. Mandatory field. By default DFT company is provided.

Administrador	<p>Specifies if the user is administrator in eBIT400. An administrator user will have rights: full menu option access, manage all documents of all users.</p> <p>A non-admin user can only access their own documents in their folders, except that you have specified in detail in this screen. A non-administrator user can not access Administrator menu.</p> <p>Values:</p> <ul style="list-style-type: none"> 1 User is administrator. 0 User is NOT an administrator. <p>When set to a non-administrator (value 0), specifies whether the user has access to all application users. This parameter is in combination with other parameters: Access a.</p> <p>In the case of specifying the value N in this parameter, ie NOT have access to all users of the application, you can press the function key F7 (Aut. Users) to specify which users have access...</p> <div style="border: 1px solid black; padding: 10px; margin: 10px 0;"> <p>Nota Remember that there is three options:</p> <ul style="list-style-type: none"> 1- full access to all the users (Administrator) 2- access only a few users (Group Administrator) 3- standard user (User) <p>To obtain full access option 1 should be selected. For the rest, select option 0 and use F6 function key to select users to access.</p> </div>
eMail FROM	Specify the FROM address that the user is sending eMail documents. By default SMTP address appears assigned to the user, allowing editing. Required field if you want this user to send emails. It need not be necessarily "his" personal leadership.
Plantilla	Specifies a filename to be used to identify a Logo / Graphic for overlay.
Departamento	Specifies department belong to the user. Mandatory field.
Idioma	Specifies menu language. By default ES (Spain).
Linea Fax dft	Specifies fax line assigned to this user (if this module is active).
Firma electrónica	Specifies digital signature assigned to this user, when the user choose to sign a document.
Cover Fax	Specifies the cover page used when sending faxes.
Notificar	Specifies how will be notified the user when a document has been sent. Options are:

	<p>*NEVER Never will receive notification.</p> <p>*FINAL A notification will be generated with the final result of transmission.</p> <p>*FAIL A notification will be generated if the transmission fails.</p> <p>*SUCCESS A notification will be generated if the transmission go well.</p>
Tipo notificación	<p>Specify how to receive notifications. Options are:</p> <p>Blank No notifications.</p> <p>EMAIL Notifications by eMail.</p> <p>FAX Notifications by Fax.</p> <p>SMS Notifications by SMS.</p>
Notificar a eMail	<p>Specifies the email address or fax number or SMS number to which you will receive notification as the notification type introduced in the previous field.</p>
Comprimir adjuntos	<p>Specifies if attachments send by the user should be compress in ZIP file. Options are:</p> <p>1 User can compress attachments.</p> <p>0 User can't compress attachments.</p>
Editor	<p>Specifies the text editor user will use in creating documents. This field, being at the user level, allows each user to the text editor that suits you regardless of other users. Options are:</p> <p>0 EBIT400 advanced editor will be used.</p> <p>1 EBIT400 basic editor will be used.</p>
Puede enviar eMail	<p>You can allow or not eMail option to users; eMail module should be licensed in EBIT400. Options are:</p> <p>1 User can send eMails.</p> <p>0 User can't send eMails.</p>
Puede enviar Fax	<p>You can allow or not Fax option to users; Fax module should be licensed in EBIT400. Options are:</p>

- 1 User can send faxes.
- 0 User can't send faxes.

Puede enviar SMS You can allow or not SMS option to users; SMS module should be licensed in EBIT400.

Options are:

- 1 User can send SMS messages.
- 0 User can't send SMS messages.

Puede enviar Archive Si se dispone del Módulo de envíos de Archive, al Usuario se le da acceso a poder enviar Archive.

Options are:

- 1 User can send Archive messages.
- 0 User can't send Archive messages.

Puede enviar GDR You can allow or not GDR option to users; GDR module should be licensed in EBIT400.

Options are:

- 1 User can send GDR messages.
- 0 User can't send GDR messages.

Possible function keys can be used, are described in the table below.

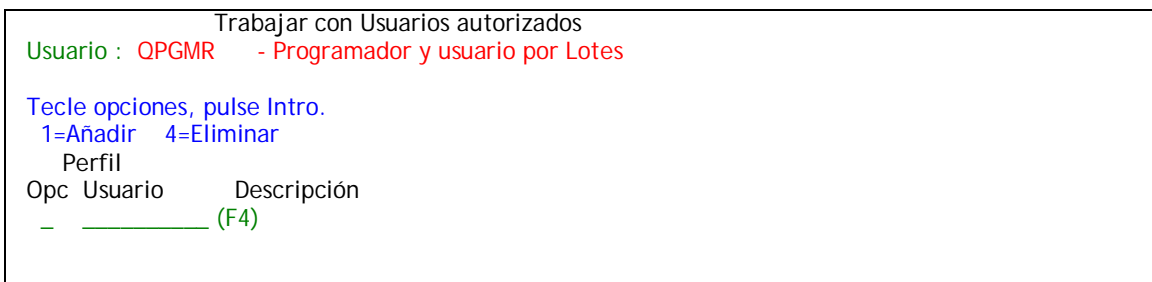
Function key	It used to . . .
F12=Cancelar	Go back to previous menu.

User rights (Autorizaciones a usuarios)

Autorizaciones a usuarios gives user rights to manage documents from other users.

To allow to manage with other users

1. From *Crear/Modificar un Usuario* screen, press **F6** function key (F6=Usuarios autorizados).
2. Next screen will appear.



F3=Salir F12=Cancelar

In this screen appears all users on which the user being edited has the right to work with their documents.

To add a new user

1. Type option 1 follow by the user name and press Intro.
F4 function key, will show all the users, where you can choose.

To delete an user

1. Type option 4 next to the user that you wanto to delete and press Intro.

Possible function keys can be used, are described in the table below.

Function key	Its used to . . .
F3=Salir	Ends actual session and go back to previous task.
F4=Lista Usuarios del Sistema	Show all users, and you can choose one.

Modify user

The system administrator can modify configuration attributes of a user when necessary. The changes will be carried out immediately that the user re-enter the application again.

To modify an user in eBIT400

1. From *Trabajar con Usuarios* screen, enter option 2 (2 = Modificar) in the option field.

For more information on each of the parameters of this option see Adding a new user in this chapter.

Copy an user

The system administrator can copy all user information to new one profile.

To copy an user in eBIT400

1. Desde la pantalla de *Trabajar con Usuarios*.

From *Trabajar con Usuarios* screen, enter option 3 (3 = Copiar) in the option field.

2. It will appear an screen where you should introduce the new user. F4 function key, will show all the users, where you can choose.
3. After selecting the new user, the screen with all new user data, copied from the user selected previously, will appear (see *Modificar un Usuario*).

eBIT400 Servers/Modules

The option Definir SERVIDORES / MODULOS in administrator menu allows to carry out the control of all servers to be used by eBIT400 for sending and receiving documents through alternative channels: fax, eMail, SMS, etc. . Each server that will be used in the application is necessary to define a new module. Also allows to include servers that installed remotely in another location, to be controlled from the IBM iSeries where eBIT400 application is running. Each server / module may have defined modules available and contracted, although they are in Demo.

In this chapter

- Working with Servers/Modules.
- Add a new Server/Module.
- Modify a Server/Module.
- Delete a Server/Module.
- Main eBIT400 modules.

Working with Servers/Modules

Trabajar con Servidores option allows you to access the screen where you can perform the various options available to devices.

How to access Trabajar con Servidores/Módulos menu

1. From eBIT400 administrator menu. Select option **15** (Trabajar con Servidores).
2. Next screen will appear:

Trabajar con Servidores					
Tecle opciones, pulse Intro.					
1=Añadir 2=Cambiar 4=Suprimir 5=Visualizar					
Opc	Nombre	Servidor/Host	Descripción	Rdy	Sts
-	BitonSMS	IO	modulo sms	-	1
-	BtArchive		modulo copyfile	R	1
-	EskerBitonR	IO	modulo recepcion	-	1
-	EskerBitonS	S653E862	modulo envio	R	1
-	Esker1	BO117	Modulo envío ESKER	-	0
-	SapConnetor		Modulo pasarela SAP	-	0
-	SapConnetorPC	BO117	Modulo pasarela SAP	R	1
					Final
F3=Salir F5=Actualizar					

From this screen you will be able to add, modify and delete servers or modules.

Specifications	Meaning
Opc	Field to introduce option choose.
Nombre	Show Server/Module name.
Servidor/Host	Show IP or server name (DNS server is required).
Descripción	Specifies Server/Module description.
Estado	Show actual device status. This status inform to administrator if this server/module is working or not.
Activo	R Module ready.
	E Module with errors.
	Inform if this module should start or not during EBIT startup.
	1 Module should be active.
	0 Module should not be active.

The menu options can be used are discussed in the following table.

Menu option	It used to . . .
1=Añadir	Allows to add a new Server Its mandatory to specify a name and it should not be yet defined.
2=Cambiar	To modify attributes of this server.
4=Suprimir	To delete a server from eBIT400 . Its recommended to stop EBIT400 subsystem before to delete a server.

Possible function keys can be used, are described in the table below.

Function key	Its used to . . .
F3=Salir	Ends actual session and go back to previous task.
F5=Actualizar	Refresh information in actual screen.

Add Server/Module

Option *Add Server* allows you add a new Server or Module in **eBIT400** to be used by users.

How add a Server/Module

1. From **eBIT400** administrator menu.
Select option **15** (Trabajar con Servidores).
2. From *Trabajar con Servidores* menu, introduce option **1** and indicate a name for this new Server/Module. (It should be a name that doesn't exist yet).
3. Afterwards appears this screen:

```

Módulo

Nombre . . . . . demo_____ Id. 000000000
Descripción . . . demo esker_____
Servidor . . . . . _____
Clase . . . . .
Entrada/Salida . A I=Input, O=Output, A=All
Tipo . . . . . _____ F4=Lista
Activo . . . . . 0 0=Desactivado, 1=Activado
Permite Fax . . . 0 1=Si, 0=No
Permite eMail . . 0 1=Si, 0=No
Permite SMS . . . 0 1=Si, 0=No
Permite Archivo . 0 1=Si, 0=No
Permite GDR . . . 0 1=Si, 0=No
Configuración
<cfg><host></host><usuario>eskeradmin</usuario><password>eskeradmin</password></cfg>
_____
_____

Estado . . . . .
Información . . .

F12=Cancelar -INTRO- para aplicar cambios
    
```

In this screen you have to enter all the settings that define the kind of server and communications.

Field	It used to . . .
Nombre	Name of this server.
Descripción	Description of this server.
Servidor	Specify the hostname of the server hosting the module specified in the configuration parameter. Blank indicates that is the main Host.
Clase	This value is retrieved automatically based on the type of module selected.
Entrada/Salida	Specify if the server can process input documents and / or output. Possible values are: <div style="display: flex; align-items: center;"> <div style="margin-right: 20px;"> <p>A</p> <p>I</p> </div> <div> <p>All, both Input and Output.</p> <p>Only Input documents.</p> </div> </div>

	0	Only output documents.
Tipo		Specify the type of module to be used. Pressing the F4 key will appear in the different eBIT400 modules.
Activo		Specify whether the module will be activated once you start the subsystem EBIT400. Possible values are:
	0	Its not active.
	1	Its active.
Permite FAX		Specify if the server can process FAX documents. Possible values are:
	1	FAX its allowed.
	0	FAX its not allowed.
Permite e-Mail		Specify if the server can process eMail documents. Possible values are:
	1	eMail its allowed.
	0	eMail its not allowed
Permite SMS		Specify if the server can process SMS documents. Possible values are:
	1	SMS its allowed.
	0	SMS its not allowed
Permite ARCHIVO		Specify if the server can process ARCHIVE documents. Possible values are. Valores posibles:
	1	ARCHIVE its allowed.
	0	ARCHIVE its not allowed.
Permite GDR		Specify if the server can process GDR documents. Possible values are. Valores posibles:
	1	GDR its allowed.
	0	GDR its not allowed.
Configuración		Ask BitON technician before to modify this value.

Possible function keys can be used, are described in the table below.

Function key	It used to . . .
F3=Salir	Ends actual session and go back to previous task.
F12=Cancelar	Go back to previous menu.

Modify a Server

The system administrator can modify configuration attributes of a server when needed. The changes will be carried out immediately.

To modify an eBIT400 Server

1. From eBIT400 Administrator menu. Select option **15** (Trabajar con Servidores).

2. From menu *Trabajar con Servidores* introduce option **2** next to the server to be modified.

It will appear a menu similar than **Add a new Server**.

Once you have this screen you can proceed to make the appropriate adjustments in the various fields.

See section **Add a new Server** in this chapter for more information on each of the fields on the screen.

Delete a Server

When a server defined in the application is no longer used is recommended to delete the definition.

To delete an eBIT400 Server

1. From eBIT400 Administrator menu. Select option **15** (Trabajar con Servidores)
2. From menu *Trabajar con Servidores* introduce option 4 next to the server to be deleted.
3. A warning message appears:

Pulse Intro para confirmar la eliminación. F12 para retroceder.

4. If press Intro key the server will be deleted. If press F12, the process is aborted.

Main modules in eBIT400

Here are more details to each of the main modules you can use in eBIT400:

- Kofax Express module
- Esker module
- SMS module
- SMTP module
- ARCHIVE module
- ALFRESCO module

Kofax Express module

Clase : BtKofaxExpress
Tipo : KOFAX_EXPR

[module configuration]

Xml tags available in the 'settings' module:

lotePath:

Path XML files with information on batches processed. By default= 'PathExe'\Kofax

etiquetaExpediente:

Name of the field from which to retrieve the value assigned to the batch file. By default "EXPEDIENTE". Optional.

etiquetaTipoDoc:

Name of the label generated by KofaxExpress DocumentoLote, where you can specify whether or not to create any type of document other than defined in module. By default ="TipoDoc". Optional.

tipoDoc:

eBIT400 document type that will create the module with batch files. By default =ARCHIVO. Optional.

crearXmlDocument :

Binary value that indicates whether ebit400 shall be attached the XML file with information generated by KofaxExpress DocumentoLote. By default =0 (falso). Optional.

crearAnexoInfo :

Binary value that indicates whether the document attached ebit400 an attached file called ebit400.info with DocumentoLote file properties. Useful for transferring information to other modules such as Alfresco. By default =1 (verdadero). Optional.

sistemaSalida :

Setting to force sent by a particular server. (another server will process the created document). Optional.

Sample configuration:

```
<cfg>
  <lotePath>C:\biton\eBit400\Kofax\SalidaKofaxExpress\</lotePath>
</cfg>
```

[KofaxExpress configuration]

A Xml file by batch.

Save the documents of the batch in a subfolder with the name of the batch.

A Xml file by 'document' in each batch.

Multiplage document. Only an image file.

[How it works]

KofaxExpress module is checking the batch folder and when it encounters a document type Batch rename it to avoid interference with subsequent searches. All batch documents are processed and if all are processed without problems, files are removed.

Batch processing consist in generate an eBIT400 document with class 'recibido' for each batch file received. Document type can be informed from Kofax with tag 'etiquetaTipoDoc' o by field 'tipoDoc' in module configuration. If Kofax document contains record label 'etiquetaExpediente' it informs to apply 'record' information..

Apply a 'recod' can involve create a document different as configure. Optionally, a 'record' can execute a publish in a repository (Alfresco, folder, etc.). If the 'record' indicates a document type 'Archivo', then 'record' configuration is used to define output path.

'Record' sample:

Configure KofaxExpress to generate 'RECORD' with value 'Invoice'. Define a record 'Invoice' which creates a CMD document which execute this function. This record also indicates that this document should be store in Alfresco using data model 'InvoiceBC' with BARCODE propertie.

[EXPEDIENTE]

```
NOMBRE      : Invoice
RUTA        : /app:company_home/cm:ebit400/cm:sample/cm:invoices
NAMESPACE   : http://www.demo_invoice.es/model/content/1.0
TYPE_NAME   : InvoiceBC
WRKSPC_STORE
USE_ASPECT  : 0
PROPIEADAES : BARCODE
FUNCION     : ZINVOICE_WO_OCR_BC
TIPO_DOC    : CMD
```

[Batch sample from KofaxExpress]

KofaxExpress batch:

```
<?xml version="1.0"?>
<Batch xmlns:xsi="http://www.w3.org/2001/XMLSchema-instance"
xmlns:xsd="http://www.w3.org/2001/XMLSchema">
  <Version>1</Version>
  <Name>Lote064</Name>
  <ReleasePath>C:\biton\Kofax\Salida</ReleasePath>
  <CreationDate>2010/11/26</CreationDate>
  <CreationTime>15:02:22</CreationTime>
  <ProcessStartDate>2010/12/03</ProcessStartDate>
  <ProcessStartTime>11:38:49</ProcessStartTime>
  <User>EXPRESS\Administrador</User>
  <Statistics>
    <DocumentCount>2</DocumentCount>
    <FirstDocument>1</FirstDocument>
    <LastDocument>2</LastDocument>
  </Statistics>
  <IndexFields>
    <IndexField>
      <Label>BARCODE</Label>
      <Default>&lt;AllBarCodes&gt;</Default>
      <Sticky>>false</Sticky>
      <ReadOnly>>false</ReadOnly>
      <Format />
      <MinimumLength>0</MinimumLength>
      <Required>>true</Required>
    </IndexField>
  </IndexFields>
```

```

    <Label>EXPEDIENTE</Label>
    <Default>"Factura"</Default>
    <Sticky>>false</Sticky>
    <ReadOnly>>false</ReadOnly>
    <Format />
    <MinimumLength>0</MinimumLength>
    <Required>>false</Required>
  </IndexField>
</IndexFields>
</Batch>

```

KofaxExpress document:

```

<?xml version="1.0"?>
<Batch xmlns:xsi="http://www.w3.org/2001/XMLSchema-instance"
xmlns:xsd="http://www.w3.org/2001/XMLSchema">
  <Version>1</Version>
  <Name>Lote064</Name>
  <ReleasePath>C:\biton\Kofax\Salida</ReleasePath>
  <CreationDate>2010/11/26</CreationDate>
  <CreationTime>15:02:22</CreationTime>
  <ProcessStartDate>2010/12/03</ProcessStartDate>
  <ProcessStartTime>11:38:49</ProcessStartTime>
  <User>EXPRESS\Administrador</User>
  <Statistics>
    <DocumentCount>2</DocumentCount>
    <FirstDocument>1</FirstDocument>
    <LastDocument>2</LastDocument>
  </Statistics>
  <IndexFields>
    <IndexField>
      <Label>BARCODE</Label>
      <Default>&lt;AllBarCodes&gt;</Default>
      <Sticky>>false</Sticky>
      <ReadOnly>>false</ReadOnly>
      <Format />
      <MinimumLength>0</MinimumLength>
      <Required>>true</Required>
    </IndexField>
    <IndexField>
      <Label>EXPEDIENTE</Label>
      <Default>"Factura"</Default>
      <Sticky>>false</Sticky>
      <ReadOnly>>false</ReadOnly>
      <Format />
      <MinimumLength>0</MinimumLength>
      <Required>>false</Required>
    </IndexField>
  </IndexFields>
</Batch>

```

Esker module

Clase : BtEdpwsSend
 Tipo : EDPWS_SND

[Module configuration]

Xml tags available in the 'settings' module:

host :

Name or IP where Esker is installed.

username :

User name to establish connection with Esker server.

password :

User password.

emailRecipientType :

Recipient type for eMail documents. SM:Smtp, LN:Lotus Notes, ...): By default=SM (Internet mail). Optional.

gdr_configuracion :

Rule configuration folder used by GDR documents. By default=biton. Optional.

prioridad :

Priority level: (6:Regular; 4:Urgent; 2:Immediate; 8:Low). By default=6 (normal). Optional.

msg_head :

Text header added at the beggining of the message. Optional.

msg_foot :

Text footer added at the end of the message. Optional.

owner_id :

Owner ID od documents. It should include "#usuario#" tag, which will be replace with eBIT400 document user owner. By default="cn=#usuario#,ou=_EskerPhonebook". Optional.

add_additional_attachments :

Option to allow (1) if a GDR conversion generates multiples files, all are used as eBIT400 document attachments. By default: true (1). Optional.

send_additional_attachments :

Option to allow (1) additional file obtained from GDR conversion, are used as attachments. Optional.

recipient_type_check :

Recipient type used by GDR conversion. By default = CF (CopyFile connector). Optional.

Sample configuration:

```
<cfg>
  <host>BITON_ESKER</host>
  <username>ebit400Esker</username>
  <password>ebit400Esker</password>
  <recipient_type_check>CL</recipient_type_check>
</cfg>
```

[How it works]

This module is capable of delivering any kind document supported by Esker platform and also capable of using Esker GDR engine to do document conversion before transmission (GDR template should be defined in eBIT400).

SMS sending module with modem

Clase : BtSmsComm
Tipo : SMS_COMM

[Module configuration]

Xml tags available in the 'settings' module:

gateways :

List of devices, availables defined with tag <gateway>.

gateway/puerto :

Serial port used by this device.

gateway/pin :

'pin' code.

gateway/puk :

'puk' code.

gateway/baudios :

Serial speed communication. By default=9600 bps. Optional.

gateway/activo :

(0) disabled or (1) active. By default=1. Optional.

Sample configuration:

```
<cfg>
  <gateways>
    <gateway>
      <puerto>COM1</puerto>
      <pin>1234</pin>
    </gateway>
  </gateways>
</cfg>
```

[How it works]

SmsComm module pickup documents to be sent by SMS and send them through a modem available in the list.

eMail SMTP module

Clase : BtEmailSmtplib
Tipo : EMAIL_SMTP

[Module configuration]

Xml tags available in the 'settings' module:

host :
IP or host name of eMail server in charge for sent eMails.

auth :
(1) eMail authentication enabled. (0) authentication disabled. By default=0. Optional.

username :
User name used during authentication.

password :
User password.

debug :
(1) debug enabled. (0) debug disabled. By default=0. Optional.

mechanism :
List of mechanisms to consider. Only mechanisms supported by the server will be used.
To connect to Exchange server, NTLM protocol should be used. By default=" LOGIN PLAIN DIGEST-MD5"

msg_head :
Header message added at the top of the message. Optional.

msg_foot :
Footer message added at the bottom of the message. Optional.

Sample configuration:

```
<cfg>  
  <host>192.168.1.1</host>  
  <port>25</port>  
  <username>username</username>  
  <password>password</password>  
</cfg>
```

[How it works]

EmailSmtplib module picks up documents to be sent by eMail and establishes a SMTP connection with the mail server and delivers eMail traffic to it.

Archive module in folder

Clase : BtArchivoFlr
Tipo : ARCH_FLD

[Module configuration]

This module has not parameters.

[How it works]

ArchiveFolder module pickups documents type ARCHIVO and save attachments in the PATH specified in TO field.

Alfresco module

Clase : BtAlfrescoWsSend
 Tipo : ALFWS_SND

[Module configuration]

Xml tags available in the 'settings' module:

host :

IP or host name where Alfresco is running.

username :

User name used in authentication.

password :

User password.

workspaceStore :

Name space. By default="SpaceStore". Optional.

namespaceContent :

Environment content. By default ="http://www.alfresco.org/model/content/1.0".
Optional

typeNameContent :

Content type (valid in the name space defined). By default="content". Optional.

pathContent :

Default path where documents are stored when path is not defined. By default="/app:company_home/app:user_homes" Optional.

alfrescoUrl :

URL prefix to build Alfresco web links.
By default="http://alfresco:8080/alfresco/d/a/" Optional.

useAspect :

(1) use aspect true. (0) Dont use aspect. By default=0. Optional.

namespaceAspect :

Name space for aspect. Optional.

typeNameAspect :

Aspect content type. Optional.

versioningContent :

(1) versioning allowed. (0) versioning not allowed. By default=1. Optional.

Sample configuration:

```
<cfg>
  <host>test.biton.es:8080</host>
  <username>biton</username>
  <password>biton</password>
  <AlfrescoUrl>http://test.biton.es:8080/alfresco/d/d/</AlfrescoUrl>
  <useAspect>1</useAspect>
  <namespaceAspect>http://www.biton.es/model/content/1.0</namespaceAspect>
  <typeNameAspect>ebit400model</typeNameAspect>
</cfg>
```


[How it works]

AlfrescoWebService module process documents type ARCHIVO or execute o ejecuta templates type ALF and save attachments in alfresco repository. Document created can be a simple document or can be associated with an aspect. If document has metadata, this information are added as document properties.

Working with eBIT400 documents

Option Trabajar con Documentos allows users manage all your documents who has access either sent or received, depending on the rights that the Administrator has assigned.

Documents can be Fax*, eMail*, SMS* o Archivado*.

From this menu, use can create new documents to be sent, answer an incoming document, sent spools, to do queries, etc.

In this chapter

- Working with documents.

* Whenever you have purchased the corresponding module.

Working with documents

Option Trabajar con Documentos allows to manage documents sent and received.

How to access

1. From eBIT400 main menu.
Select option 10 (Trabajar con Documentos).
2. Depends screen configuration (24x80 o 27x132), it will appear a list of documents that user has rights to manage.

In a (27x132) configuration, screen will be similar this:

```

Usuario: QSECOFR F4 Trabajar con Documentos eBIT400 S653E862 30/09/09 SBS Status *ACTIVE
QSECOFR
Teclee opciones, pulse Intro. 1/3
4=Cancelar 5=Ver 6=Imprimir 7=Ampliar Información 8=Re-enviar 9=Re-enviar a R=Copiar a eMail

Tipo Asunto Emp Usuario Estado Ultimo Servidor Destinatario(s)
Actual Evento
- & email Demo DFT QSECOFR Nuevo 29/09 12.23 SrviBm JCARRERAS@BITON.ES
- & email demo envio spools del IBM i DFT QSECOFR Enviado 29/09 12.15 SrviBm JCARRERAS@BITON.ES
- & email Factura 565/2009 DFT QSECOFR Enviado 29/09 12.04 SrviBm jcarreras@biton.es
- & email envio listado Biblioteca DFT QSECOFR Enviado 28/09 23.31 SrviBm JSAENZ@BITON.ES
- & email Factura 565/2009 DFT QSECOFR Enviado 28/09 20.15 SrviBm jcarreras@biton.es
- & fax demo DFT QSECOFR Cancelado 17/09 16.48 SrviBm 104
- & fax Demo DFT QSECOFR No enviado 17/09 14.45 SrviBm 115
- & email PCL a PDF DFT QSECOFR Enviado 03/09 16.22 SrviBm JCARRERAS@BITON.ES
- & fax FAX PCL a TIF DFT QSECOFR No enviado 03/09 16.21 SrviBm 104
- & email PCL a TIF DFT QSECOFR Enviado 03/09 16.21 SrviBm JCARRERAS@BITON.ES
- & email EMAIL PCL a TIF DFT QSECOFR Enviado 03/09 16.21 SrviBm JCARRERAS@BITON.ES
- & email IMGPCl a PDF DFT QSECOFR Enviado 03/09 16.21 SrviBm JCARRERAS@BITON.ES
- & fax FAX IMGPCl a PDF DFT QSECOFR No enviado 03/09 16.21 SrviBm 104
- & email IMGPCl a PDF DFT QSECOFR Enviado 03/09 16.11 SrviBm JCARRERAS@BITON.ES
    
```

Más...

F3=Salir F5=Renovar F7=Trabajar con spools F10=Vista 2 F13=Ver todos los documentos
 F17=Inicio F18=Final F23=Filtros F6=Nuevo documento

The only difference between 24x80 and 27x132 screen configuration, its the quantity of information displayed, but in both, menu option options are the same.

In this screen you can see status for each document (eMail, SMS, Fax, Archivado).

At any time, and if the user has permission, user can work with documents of other user, it just has to enter the user name with which you want to work in the field USER: or enter the value * ALL to view all documents for all users that you have access to manage.

Specifications

Meaning

Opc.	Field to introduce option.
Tipo	Document type.

Specifications	Meaning
Asunto	Document reference or subject.
Emp	Company code. An user should be assigned always to a company.
Usuario	User perfil owner of this document.
Estado actual	Document status: <ul style="list-style-type: none"> • Nuevo (it has not benn processed yet) • No enviado (it has not been sent) • Enviándose (in process) • Pend.Cancelar (cancell pending) • Cancelándose (cancelling) • Enviado (sent correctly) • Cancelado (cancel) • Recibido (Received)
Ultimo evento	Date/time las event received for this document.
Servidor	Server name where document has been processed.
Número envío	Unique ID assigned.
Destinatario(s)	Recipients for this document.

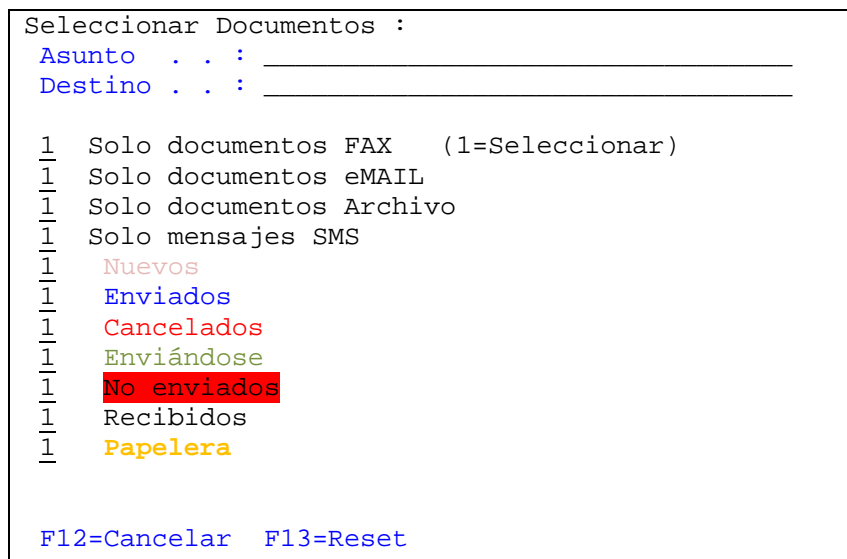
The menu options can be used are discussed in the following table.

Menu option	Is used to . . .
4=Cancelar	Cancels the request to send the document. Using this option in documents with Enviado or No Enviado status, will be deleted from eBIT400 database and it can't recover.
5=Ver	To see all attachments of this document.
6=Imprimir	To print message detail (option not allowed for this moment).
7=Ampliar Información	To see details: <ul style="list-style-type: none"> • Who is the creator • From where • Date/Time • What kind of document • Recipients • Attachments • More detail information <ul style="list-style-type: none"> ○ Why has not been sent ○ CSID destino (in fax transmission) • Message body • Events of this document
8=Re-enviar	To forward the document.

- 9=Re-enviar a To forward the document regardless of whether their status is sent or not sent or Cancelled. Its possible to edit/modify/add new recipients.
- R=Copiar a eMail To forward a fax by eMail, allowing to edit recipient list.

Possible function keys can be used, are described in the table below.

Function key	It used to . . .
F3=Salir	Ends actual session and go back to previous task.
F5=Renovar	Refresh information in actual screen.
F6=Crear un nuevo Documento	Crete a fax, eMail or archive.
F7=Trabajar con spools	Allows you to manually send any spool or listing that you have access (See <i>Chapter 2</i> for more details).
F10=Vista 2/1	Displays more data on the screen. Appears Document creation date and extended error information detected during transmission. With F10 returns to previous menu.
F17=Inicio	Change cursor position at the beginning of documents.
F18=Final	Change cursor position at the end of last 14 documents.
F13=Ver todos los Documentos/F13=No Ver Notificaciones	Allows to see or not, notification documents. If the Administrator has configured to generate a notification for each transmission, then you have access to be able to see this kind of notification documents.
F23=Filtros	Allows the user to select and apply filters to view a particular document type, by state or by document type. This is the screen that appears:



At the time the user selects any filter, when he returns to the previous screen screen appears in the top right of the screen the string "Filtro ACTIVADO", so the user can quickly detect which filter is active.

Menu option	It used to . . .
ASUNTO	Filter document whose Subject contains characters introduced. Its not case and position sensitive.
DESTINO	Filter document whose Recipient contains characters introduced. Its not case and position sensitive.
Solo documentos fax	Filter only Fax documents.
Solo documentos eMAIL	Filter only eMail documents.
Solo documentos Archivo	Filter only Archive documents.
Solo documentos SMS	Filter only Sms documents.
Nuevos	Filter documents with status 'Nuevo'.
Enviados	Filter documents with status 'Enviado'.
Cancelados	Filter documents with status 'Cancelado'.
Enviándose	Filter documents with status 'Enviando'.
No enviados	Filter documents with status 'No Enviado'.
Recibidos	Filter documents with status 'Recibido'.

Possible function keys can be used, are described in the table below.

Function key	It used to . . .
F12=Cancelar	Returns to the previous screen.
F13=Reset	Allows to delete all filters applied.

In this chapter

- Cancel a sending document.
- View a document.
- Forward a document.
- View document attributes.
- View document event traces.

Cancel a sending Document

Sometimes it may be necessary to cancel the sending of a document, either because we have realized that the recipient number is not correct, because we have something we did not want to or have forgotten to write something, etc ... That is when you have to use the option to cancel a document.

To cancel a document just use option 4 and press Enter. When a document is selected for cancellation, the application will execute the order, indicating the status of "The Pend.Cancelar".

If **eBIT400** engine can cancel the document, status will change to "Cancelado", otherwise will back again to "Enviándose".

View a Document

With option 5 you can see a list with all the attachmens of document selected. If you hace Client Access, with option 1 its possible to view attachment content. It will appear a screen similar this:

```
Ver anexos

Teclé opciones, pulse Intro.
  1=Abrir documento   5=Ver

Opc  Nombre anexo                                     Tamaño
=    Archivo Spool EBIMAIL_I6_JCT1_QSECOFR_304626.4
-    EBIMAIL_304626_QSECOFR_I6_JCT1_4.pdf

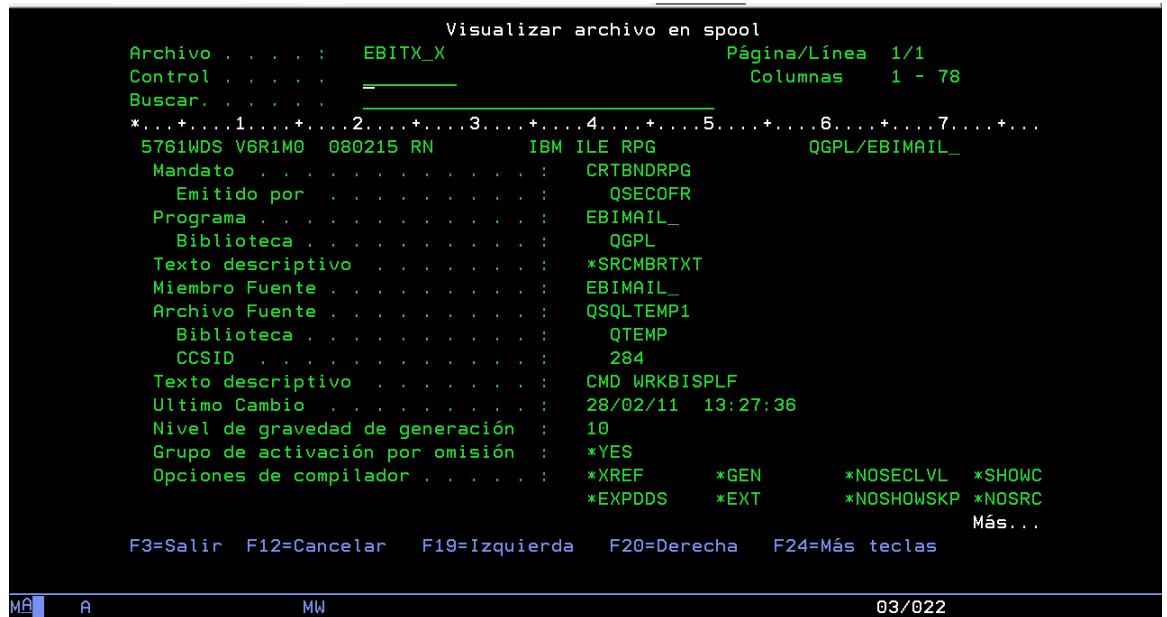
Final

F3=Salir   F5=Actualizar

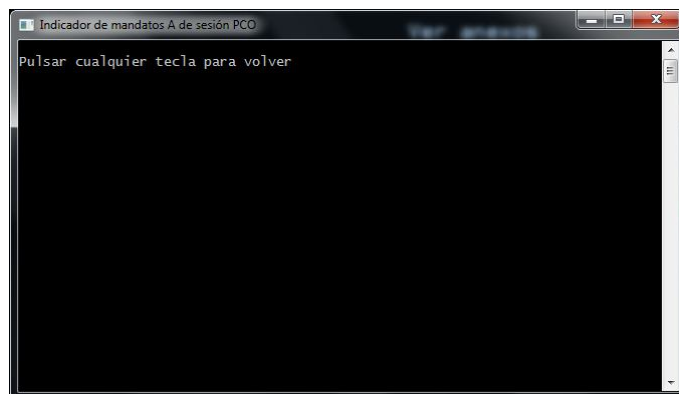
MÁ  A                               MW                               08/003
```

Specifications	Meaning
Opc.	Field to introduce the option selected.
Nombre Anexo	Attachment name.
Tamaño	Attachment size in bytes.

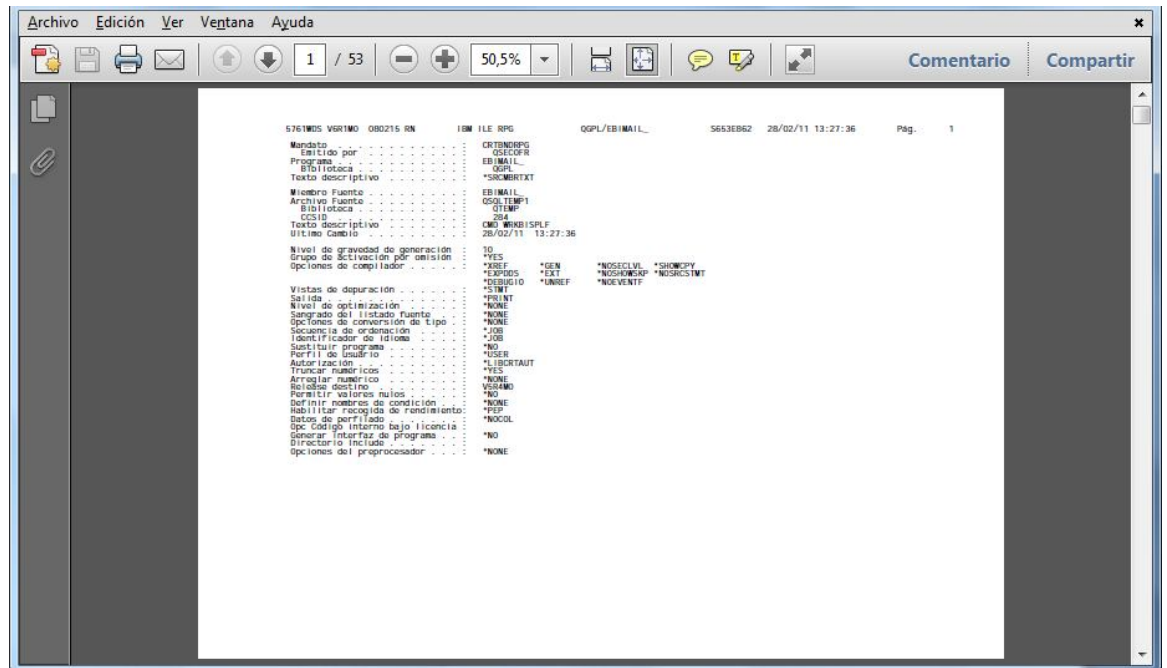
With option 1 it possible to see the final format. With option it possible to see the content in text format. For example, if a spool its viewed, the screen will be similar this:



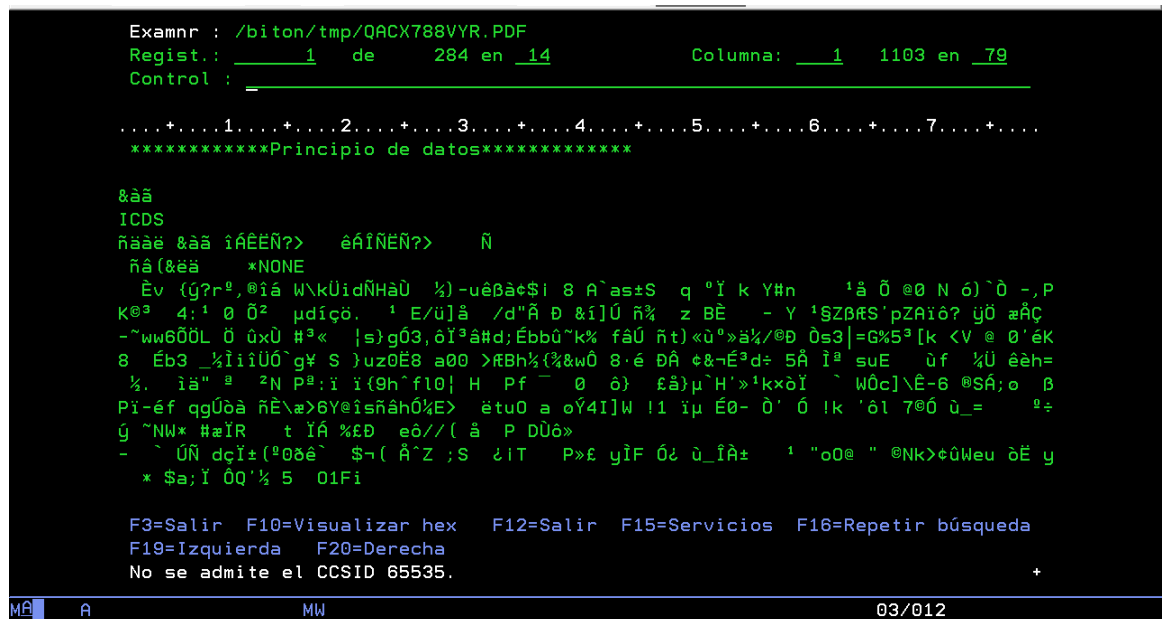
If user has Client Access and choose option 1 with documents different than spool, will appear two screens, the first one:



IMPORTANT: Dont press Enter until second screen appears.



If user selects an PDF attachment appears on screen similar this:



Possible function keys can be used, are described in the table below..

Function key	It used to . .
F3=Salir	Ends actual session and go back to previous task.
F5=Renovar	Refresh screen information.

Forward a Document

With option 9 you can forward any document with status "Enviado", "No enviado" or "Cancelado". It will appear a screen to add or modified recipients. With option 8, no recipient changes are made.

Forward a FAX

1. From list documents, after select option 9 in a fax document, a screen similar this one:

eBIT400	Re-enviar un FAX	12:10:38
Asunto:		
<hr/>		
Cubierta de página :	<u>nombre_Cubierta</u>	
Mezclar gráfico .. :	<u>nombre_Overlay</u>	
Logo Cabecera :	<u>nombre_Logo</u>	
Fax N° :	_____	F4=Lista
De :	_____	
A :	_____	
F3=Salir F8=Editar Texto F10=Enviar		

Specifications	Meaning
Asunto	Allows to define or modify reference document.
Cubierta de Página	Its not allowed to change it. Appears cover page name.
Mezclar Gráfico	Its not allowed to change it. Appears overlay name.
Logo Cabecera	Its not allowed to change it. Appears logo name.
Fax Número	Allows to introduce fax number. With F4 appear phonebook.
De	Allows to introduce From field in Cover Page.
A	Allows to introduce To field in Cover Page.

Possible function keys can be used, are described in the table below..

Function key	It used to . . .
F3=Salir	Ends actual session and go back to previous task.

F8=Editar Texto

eBIT400 has an embedded basic editor to write body fax message.

F10=Enviar

F10 send the actual document. Appears a screen where you can choose a deferred date/time to send the document.

Forward an eMail

1. From list documents, after select option 9 in a eMail document, a screen similar this one:

Re-enviar un eMAIL 12:35:52

De: soporte@biton.es

Asunto: _____

A: _____ F4
 _____ F4
 _____ F4
 Más...

CC: _____ F4
 _____ F4
 _____ F4
 Más...

Bcc: _____ F4
 _____ F4
 Más...

F3=Salir F8=Editar Texto F10=Enviar

Specifications	Meaning
De	By default appears user email address assigned in eBIT400 .
Asunto	Allows to define eMail Subject.
A	Allows to specify recipients to send the document. With F4 appears phonebook. A maximum of 60 eMail address are allowed.
CC	Allows to specify recipients copy (CC) to send the document. With F4 appears phonebook. A maximum of 60 eMail address are allowed.
BCC	Allows to specify recipients blind copy (BCC) to send the document. With F4 appears phonebook. A maximum of 60 eMail address are allowed.

Possible function keys can be used, are described in the table below.

Function key	Its used to . . .
F3=Salir	Ends actual session and go back to previous task. No se re-envía el documento.
F8=Editar Texto	eBIT400 has an embedded basic editor to write body eMails message.
F10=Enviar	F10 send the actual document. Appears a screen where you can choose a deferred date/time to send the document.

Forward an Archive

1. From list documents, after select option 9 in a eMail document, appears a screen similar this one:

eBIT400	Re-enviar un Archive	10:44:44
Asunto: Test Archive		
<hr/>		
Path :		
/tmp/		
<hr/>		
<hr/>		
F3=Salir F10=Enviar F12=Cancelar		

Specifications	Meaning
Asunto	Allows to define Archive Subject.
PATH	Allow to define iSeries IFS PATH (should start with "/") or PATH in a network host (should start with "\\") where you want to forward the document selected.
Function key	Its used to . . .
F3=Salir	Ends actual session and go back to previous task. No se re-envía el documento.
F10=Enviar	F10 send the actual document. Appears a screen where you can choose a deferred date/time to send the document.
F12=Cancelar	Ends actual session and go back to previous task.

Document detail information

With option 7 in any document, you can see extra information about the document selected. Appears a screen similar this one:

```

VISTA AMPLIADA de un DOCUMENTO

Nº de ENVIO 851 Situación ACTUAL Enviado
EMAIL Empresa : DFT

Asunto ... : demo

De: jcarreras.biton@biton.es
A: jcarreras@biton.es

CREADO el ..... 01-03-2011 10:38 por QSECOFR en InfoPrint
PROCESADO el ..... 01-03-2011 10:40
ENVIADO el ..... 01-03-2011 10:41 por el Servidor Esker BITON-TS

A N E X O S
EBIMAIL_304626_QSECOFR_I6_JCT1_4.pdf

E V E N T O S
01-03-2011 10:38 OUTQS Spool_InfoPrint
01-03-2011 10:40 WorkflowService[VENUS] Iniciado

F5=Renovar Más...
Av.Página / Re. Págin

MÁ A MW 01/001

```

You will see all possible data: Recipients, attachments (signed yes or not), body and events. Also if transmission has been not success, explain reason.

Possible function keys can be used, are described in the table below.

Function key	Its used to . . .
F5=Renovar	Refresh screen information.

Forward by eMail a Fax

From list of documents, select option -R- in a fax document.

A screen similar this one will appear:

Re-enviar un eMAIL 12:35:52

De: sosporte@biton.es

Asunto: _____

A: _____ F4
 _____ F4
 _____ F4
 Más...

CC: _____ F4
 _____ F4
 _____ F4
 Más...

Bcc: _____ F4
 _____ F4
 Más...

F3=Salir F8=Editar Texto F10=Enviar

Specifications	Meaning
De	By default appears your eMail address assigned in eBIT400 .
Asunto	Allows to define eMail Subject.
A	Allows to specify recipients to send the document. With F4 appears phonebook. A maximum of 60 eMail address are allowed.
CC	Allows to specify recipients copy (CC) to send the document. With F4 appears phonebook. A maximum of 60 eMail address are allowed.
BCC	Allows to specify recipients blind copy (BCC) to send the document. With F4 appears phonebook. A maximum of 60 eMail address are allowed.

Possible function keys can be used, are described in the table below.

Function key	Its used to . . .
F3=Salir	Ends actual session and go back to previous task. No se re-envía el documento.
F8=Editar Texto	eBIT400 has an embedded basic editor to write body eMails message.

F10=Enviar

F10 send the actual document. Appears a screen where you can choose a deferred date/time to send the document.

Working with OUTQs

eBIT400 provides an OUTQ named EBIT/SND which allows to capture automatically any kind of spools and send it by fax, eMail, GDR o Archive.

If the client wishes to include any other OUTQ of your system, may do so without any problem.

In this chapter

- Working with Outqs.
- Add a new Outq.
- Modify an Outq.
- Delete an Outq.

Working with OUTQS

Option *Trabajar con Outqs* allows system administrator to access the menun from which you can update list of OUTQs available on **eBIT400**.

1. From **eBIT400** main menu. Select option **12** (Trabajar con Outqs).
2. A screen similar this one will appear:

```

                                Trabajar con Outqs

Tecle opciones, pulse Intro.
  1=Añadir    2=Cambiar    4=Suprimir    5=Visualizar
    Cola      Modo
Opc  Salida   Biblioteca  Proceso     Estado
  _  _____  _____
  _  SND      EBIT      TEXTO      Disponible

Final

F3=Salir    F5=Actualizar

```

In this menu, you will see a list with all outqs defined in **eBIT400**.

Specifications	Meaning
Cola de Salida	OUTQ name.
Biblioteca	OUTQ libray name.
Modo Proceso	(See chapter <i>Add a new OUTQ</i>)
Estado	OUTQ status.

Possible option are:

Menu option	Its used to . . .
1=Nueva	Add a new OUTQ.
2=Modificar	Modify OUTQ information.
4=Suprimir	Delete an OUTQ.
5=Visualizar	View OUTQ information.

Possible function keys can be used, are described in the table below.

Function key	Its used to . . .
F3=Salir	Ends actual session and go back to previus task.

F5=Actualizar

Refresh information in actual screen.

Add an OUTQ in eBIT400 platform

Option *Añadir una OUTQ* allows to add a new OUTQ in **eBit400** platform.

1. From **eBIT400** administrator menu. Select option **12** (Trabajar con Outq).
4. From screen *Trabajar con OUTQs* select option **1** and fill fields Queue name and library. After this, a screen similar this one will appear:

```

Cola de Salida

Teclee elecciones, pulse Intro.
Cola de Salida. . . SND_____
Biblioteca . . . EBIT_____
Procesar como . . . TEXTO_____  IMGPC, IMGTF, TEXT, TTA4, TXPL, TXPLS
Anexar o body . . . 1_____      1=Anexar, 0=Poner como Body
Estado . . . . . 1_____      1=Preparado, 0=No disponible
Atributo . . . . . _____
_____
_____
_____
_____

F12=Cancelar  -INTRO- para aplicar cambios
    
```

Field	Meaning
Cola de Salida	OUTQ name introduced in previous screen.
Biblioteca	OUTQ library name introduced in previous screen.
Procesar como	Capture method for this OUTQ. Possible values are: IMGTIF Spools are captured using QwpzHostPrintTransform API and *WSCST specified in <i>WorkstationObject_IMGTIF</i> attribute (See <i>Trabajar con Configuración</i> chapter). With this method, spools are converted in TIF format. This method is mandatory for *AFPDS o *USERASCII spools. IMGPC Spools are captured using QwpzHostPrintTransform API and *WSCST specified in <i>WorkstationObject_IMGPC</i> attribute (See <i>Trabajar con Configuración</i> chapter). With this method, spools are converted in PCL format. This method

can be used in any kind of spool: *SCS, *AFPDS o *USERASCII.

TEXTO

Spools are captured using eBIT400 API. With this method, spools are converted in format specified in Spool Formato value. This method can't be used with *AFPDS, *IPDS o *USERASCII spools.

TXTA4

Spools are captured using eBIT400 API and converted in A4. This method can't be used with *AFPDS or *USERASCII.

TXPCLA

Spool is captured as text and converted as PCL, using spool attributes (CPIs, LPIs, rotation, etc). If you wish to add an PCX overlay in your spool, this is the correct method. This method only works with *SCS.

TXPCLS

Spool is captured as text and converted as PCL: attributes are calculated. This method only works with *SCS

Anexar o Body Specify if spool should be sent as body or attachment (only eMail transmission). Possible values are:

- 1** Sent as attachment.
- 0** Sent as body.

Estado Enable or disable this OUTQ. Possible values are:

- 0** OUTQ disabled.
- 1** OUTQ ready.

Possible function keys can be used, are described in the table below.

Function key	It used to . . .
F3=Salir	Ends actual session and go back to previous task.
F12=Cancelar	Ends actual session and go back to previous task.

Modify an OUTQ

Administrator can modify any value. Changes take effect immediately.

To modify an OUTQ

1. From **eBIT400 main menu**.
Select option **12** (Trabajar con OUTQs).
2. From menu Trabajar con OUTQs select option **2** in OUTQ that you want to modify.

It will appear a screen equal than explained in section **Add a OUTQ**.

See section **Add a OUTQ** in this chapter for more information on each of the fields on the screen.

Delete an OUTQ

When you don't want to capture any spool from an OUTQ, you must eliminate from **eBit400** platform. At the time of deleting OUTQ no longer may make use of it unless you create again.

To delete an OUTQ from eBIT400

1. From **eBit400** administrator menu. Select option **12** (Trabajar con OUTQs).
2. From menu *Trabajar con* OUTQs select option **4** in Outq that you want to delete.
3. If you press Intro, OUTQ will be deleted from **eBit400** not from iSeries.
With F12 function key, operation is aborted..

Working with Configuration

eBIT400 provides a set of Parameters used by other internal process.

In this chapter

- Working with parameters.
- Modify an parameter.
- Delete an parameter.

Working with Configuration

Option *Trabajar con Configuración* allows administrator to manage general properties that **eBit400** uses by default.

How to arrive?

1. From **eBIT400** main menu.
Select option **13** (Trabajar con Configuración).
2. Its mandatory use emulation configured as 27x132, otherwise, an error message will raise.
3. A screen similar this, will appear:

```

Trabajar con Configuración

Tecle opciones, pulse Intro.
  1=Añadir    2=Cambiar    4=Suprimir    5=Visualizar

Opc  Entrada                               Valor
-----
-   anotarDebug                            1
-   dias_historico                          30
-   dias_historico_ARCHIVO                   30
-   dias_historico_EMAIL                     30
-   dias_historico_FAX                       30
-   dias_historico_GDR                       30
-   dias_historico_ISPOOL                     30
-   dias_historico_SMS                       30
-   nivelLOG                                 0
-   FormatoSpool                             TXT
-   PageSize                                 *A4
-   RutaArchivosTemporales                   /biton/tmp/
                                           Final

F3=Salir    F5=Actualizar    F13=Ver todos los valores

```

Specifications	Meaning
Opc	Field to introduce the option selected.
Entrada	Parameter description
Valor	Parameter value.

Menu options are described in the table below:

Menu Option	Its used to . . .
2=Modificar	Modify value.
4=Suprimir	Delete parameter.
5=Visualizar	View parameter value.

Possible function keys can be used, are described in the table below.

Function key	Its used to . . .
F3=Salir	Ends the current task and returns to the screen from which you started the task.
F5=Actualizar	Refresh information in actual screen.

F13=Ver Todos los valores Allows to see all parameters including those used internally by the platform. If you press F13 again, you will see only user parameters.

Modify a Parameter

System administrator can modify any parameter. Changes take effect after to stop/start **eBit400** subsystem.

How modify a Parameter?

1. From **eBIT400** main menu.
Select option **13** (Trabajar con Configuración).
2. From menu Trabajar con Configuración select option **2** in the parameter that you want to modify.

eBIT400 Parameters

Find in the table below main Parameters used by **eBIT400**.

Specifications	Meaning				
actualizarBtdocfax	Flag to control refresh in EBIT/BTDOCFAX table with fax sent status. Possible values are: <table style="margin-left: 40px;"> <tr> <td>0</td> <td>Information is not refreshed.</td> </tr> <tr> <td>1</td> <td>Information is refreshed.</td> </tr> </table>	0	Information is not refreshed.	1	Information is refreshed.
0	Information is not refreshed.				
1	Information is refreshed.				
anotarDebug	Traces enabled or not. If is enable, traces are inserted in EBIT/BTDEBUG table. Possible values are: <table style="margin-left: 40px;"> <tr> <td>0</td> <td>Traces disabled.</td> </tr> <tr> <td>1</td> <td>Traces enabled.</td> </tr> </table>	0	Traces disabled.	1	Traces enabled.
0	Traces disabled.				
1	Traces enabled.				
aplicarEnrutamientoSalida	Flag to control document routing to a specific module; conditions are described in EBIT/BTRUTAOUT table. Possible values are: <table style="margin-left: 40px;"> <tr> <td>0</td> <td>Routing its not enabled.</td> </tr> <tr> <td>1</td> <td>Routing is enabled.</td> </tr> </table>	0	Routing its not enabled.	1	Routing is enabled.
0	Routing its not enabled.				
1	Routing is enabled.				
application	Read only value; display eBit400 name a version information.				
debugFiles	Flag to enable temporal copy in folder ./tmp. Possible values are: <table style="margin-left: 40px;"> <tr> <td>0</td> <td>Copy disabled.</td> </tr> <tr> <td>1</td> <td>Copia enabled.</td> </tr> </table>	0	Copy disabled.	1	Copia enabled.
0	Copy disabled.				
1	Copia enabled.				
dias_historico	Specify days to maintain information online in database. After this, documents are deleted automatically. A value specify for each document type has priority respect this parameter.				

- dias_historico_ARCHIVO** Specify days to maintain ARCHIVE documents type online in database. After this, documents are deleted automatically.
- dias_historico_EMAIL** Specify days to maintain EMAIL documents type online in database. After this, documents are deleted automatically.
- dias_historico_FAX** Specify days to maintain FAX documents type online in database. After this, documents are deleted automatically.
- dias_historico_GDR** Specify days to maintain GDR documents type online in database. After this, documents are deleted automatically.
- dias_historico_ISPOOL** **[Obsolete]**
- dias_historico_SMS** Specify days to maintain SMS documents type online in database. After this, documents are deleted automatically.
- emailAdministrador** From used in documents generated by **eBit400 application** (notifications, warning, ...). By default: *ebit400@ebit400.es*.
- empresaAdministrador** Company used by documents generated by **eBit400 application** (notifications, warning, ...). By default: *DFT*
- formatoFecha** Date format used in SQL sentences. By default: *yyyy-MM-dd hh:mm:ss.SSS*.
- forzarConversionNotificacion** Flag to manage conversion in notifications type PCL. By default: 1. Possible values are: 0 | 1
- gdrConversionWithTransport** Flag to submit GDR rules with submitTransport function or with external variables. By default: 1. Possible values are: 0 | 1
- intervaloBuclePendiente** Thread waiting time in charge to verify document status. By default: 25000 (25"). The value is expressed in milliseconds.
- intervaloBucleRecepcion** Thread waiting time in charge to pickup external documens. By default: 30000 (30"). The value is expressed in milliseconds.
- intervaloBucleSalida** Thread waiting time in charge to send documents. By default: 15000 (15"). The value is expressed in milliseconds.
- intervaloEsperaDiferido** Waiting time for documents submitted to external applications. By default: 10000 (10"). The value is expressed in milliseconds.
- nivelLOG** If Debug is enabled (see *anotarDebug parameter*) this entry allows to select debug level. Possible values is a range between:
- | | |
|-----------|----------------|
| 0 | Maximum level. |
| 99 | Minimum level. |
- orderByCheckAviso** "ORDER BY XXXX" sentence used to find documents that should generate an advise to the original module.

- orderByCheckEdp** "ORDER BY XXXX" sentence to find documents submitted.
- orderByOutput** "ORDER BY XXXX" sentence to find documents ready to sent.
- permitirFirmasAnonimos** Flag that prevents (0) checking the permissions of the owner of the document.
- permitirUsuariosAnonimos** If is enabled allows any user to send documents. If not, then user should be defined in **eBit400** users list.
- plantillasAnuladas** Templates that should not be processed; entries must be delimited by comas.
- spl_buscar_si_usrdfndata**
 Commands are searched inside spool content and USRDFNDTA attribute in any spool processed in OUTQs defined in eBit400 as text method. Behaviour is controlled by this parameter. *Possible values are:*
- | | |
|----------|---|
| 0 | Commands are not searched in USRDFNDTA. |
| 1 | Commands are searched in USRDFNDTA. |
- usuarioAdministrador** Owner of the documents generated by **eBit400** application (notifications, warnings, ...).
- ASPGRP** Specify Application Service Provider (ASP) used.
- | | |
|-------------------|---------------|
| nombre_asp | ASP name. |
| Blank | ASP not used. |
- Body_por_omision** Requires body field in documents as mandatory.
- CLASSPATH** Specify ClassPath value, used by Java machine.
- ComoRecuperarSPOOLMANUAL**
 Specify whic methid is used to manage spools, sent manually. Possible values are:
- | | |
|---------------|---------------------------------------|
| TEXT4 | DIN A4 format. |
| TEXT0 | Using spool attributes. |
| IMGTIF | TIF format. |
| IMGPCL | PCL format. |
| TXPCLA | PCL format (using CPIs/LPIs). |
| TXPCLS | PCL formato PCL (using width/height). |
- ControlarTimeoutSession**
 Timeout for user web session (applies only for eBitWeb module). Value 0 means no timeout. The value is expressed in seconds.
- F4_FAX_**
 This parameter allows to specify a SQL sentence to retrieve fax phone book. By default:
- ```
Select DST_FAX FROM EBIT/BTAGENDA Where
DST_FAX <> Order By DST_FAX
```
- IMPORTANT:** Only the first field is selected on the screen to represent the list of destinations. No matter the name of the field. This is an alphanumeric field.

- F4\_FAX\_userPerfil** Same as F4\_FAX\_ but only for user perfil specified. For example:
- F4\_FAX\_QPGMR  
F4\_FAX\_QSECOFR .../...
- F4\_EMAIL\_** This parameter allows to specify a SQL sentence to retrieve fax phone book. By default:
- Select DST\_EMAIL FROM EBIT/BTAGENDA Where  
DST\_EMAIL <> Order By DST\_EMAIL
- IMPORTANT: Only the first field is selected on the screen to represent the list of destinations. No matter the name of the field. This is an alphanumeric field.
- F4\_EMAIL\_userPerfil** Same as F4\_EMAIL\_ but only for user perfil specified. For example:
- F4\_EMAIL\_QPGMR  
F4\_EMAIL\_QSECOFR .../...
- F4\_SMS\_** This parameter allows to specify a SQL sentence to retrieve SMS phone book. By default:
- Select DST\_SMS FROM EBIT/BTAGENDA Where  
DST\_SMS <> Order By DST\_SMS
- IMPORTANT: Only the first field is selected on the screen to represent the list of destinations. No matter the name of the field. This is an alphanumeric field.
- F4\_SMS\_userPerfil** Same as F4\_SMS\_ but only for user perfil specified. For example:
- F4\_SMS\_QPGMR  
F4\_SMS\_QSECOFR .../...
- FONT** Specify font used during PDF generation when a \*SCS spool is processed. Possible values are:
- \*CONVERT \*COURIER (by default).  
\*COURIER \*COURIER.  
\*COURIERB \*COURIER Bold.  
\*COURIERO \*COURIER italic.  
\*COURIERBO \*COURIER italic Bold.  
\*HELVETICA \*HELVETICA.  
\*HELVB \*HELVETICA bold.  
\*HELVO \*HELVETICA italic  
\*HELVBO \*HELVETICA italic Bld  
\*TIMES \*TIMES.  
\*TIMESB \*TIMES bold.  
\*TIMESI \*TIMES italic.  
\*TIMESBI \*TIMES italic Bld
- FONT\_PCL** Specify PCL font tag added during PDF generation when a \*SCS spool is processed. Possible values are:
- \*CONVERT \*COURIER (by default).  
\*COURIER \*COURIER.  
\*COURIERB \*COURIER Bold.

|                                |                                                                                                                                                                                                                                                                                                                                                                                                                                                                                                                                                                                                          |              |                                                                                                                                    |             |                                                                                                                                            |            |             |            |             |             |              |            |             |
|--------------------------------|----------------------------------------------------------------------------------------------------------------------------------------------------------------------------------------------------------------------------------------------------------------------------------------------------------------------------------------------------------------------------------------------------------------------------------------------------------------------------------------------------------------------------------------------------------------------------------------------------------|--------------|------------------------------------------------------------------------------------------------------------------------------------|-------------|--------------------------------------------------------------------------------------------------------------------------------------------|------------|-------------|------------|-------------|-------------|--------------|------------|-------------|
| <b>FormatoSpool</b>            | Define default output format when a *SCS spool is processed. Possible values are: <table border="0" style="margin-left: 20px;"> <tr><td><b>TXT</b></td><td>TXT format.</td></tr> <tr><td><b>PDF</b></td><td>PDF format.</td></tr> <tr><td><b>RTF</b></td><td>RTF format.</td></tr> <tr><td><b>XLS</b></td><td>XLS format.</td></tr> <tr><td><b>HTML</b></td><td>HTML format.</td></tr> <tr><td><b>TIF</b></td><td>TIF format.</td></tr> </table>                                                                                                                                                         | <b>TXT</b>   | TXT format.                                                                                                                        | <b>PDF</b>  | PDF format.                                                                                                                                | <b>RTF</b> | RTF format. | <b>XLS</b> | XLS format. | <b>HTML</b> | HTML format. | <b>TIF</b> | TIF format. |
| <b>TXT</b>                     | TXT format.                                                                                                                                                                                                                                                                                                                                                                                                                                                                                                                                                                                              |              |                                                                                                                                    |             |                                                                                                                                            |            |             |            |             |             |              |            |             |
| <b>PDF</b>                     | PDF format.                                                                                                                                                                                                                                                                                                                                                                                                                                                                                                                                                                                              |              |                                                                                                                                    |             |                                                                                                                                            |            |             |            |             |             |              |            |             |
| <b>RTF</b>                     | RTF format.                                                                                                                                                                                                                                                                                                                                                                                                                                                                                                                                                                                              |              |                                                                                                                                    |             |                                                                                                                                            |            |             |            |             |             |              |            |             |
| <b>XLS</b>                     | XLS format.                                                                                                                                                                                                                                                                                                                                                                                                                                                                                                                                                                                              |              |                                                                                                                                    |             |                                                                                                                                            |            |             |            |             |             |              |            |             |
| <b>HTML</b>                    | HTML format.                                                                                                                                                                                                                                                                                                                                                                                                                                                                                                                                                                                             |              |                                                                                                                                    |             |                                                                                                                                            |            |             |            |             |             |              |            |             |
| <b>TIF</b>                     | TIF format.                                                                                                                                                                                                                                                                                                                                                                                                                                                                                                                                                                                              |              |                                                                                                                                    |             |                                                                                                                                            |            |             |            |             |             |              |            |             |
| <b>InfoprintServer</b>         | If customer has IBM Infoprint Server (5761 IP1), it can be used for PDF conversions. Possible values are: <table border="0" style="margin-left: 20px;"> <tr><td><b>0</b></td><td>IBM Infoprint Server is not enabled.</td></tr> <tr><td><b>1</b></td><td>IBM Infoprint Server is enabled and can be used for PDF conversions.</td></tr> </table>                                                                                                                                                                                                                                                         | <b>0</b>     | IBM Infoprint Server is not enabled.                                                                                               | <b>1</b>    | IBM Infoprint Server is enabled and can be used for PDF conversions.                                                                       |            |             |            |             |             |              |            |             |
| <b>0</b>                       | IBM Infoprint Server is not enabled.                                                                                                                                                                                                                                                                                                                                                                                                                                                                                                                                                                     |              |                                                                                                                                    |             |                                                                                                                                            |            |             |            |             |             |              |            |             |
| <b>1</b>                       | IBM Infoprint Server is enabled and can be used for PDF conversions.                                                                                                                                                                                                                                                                                                                                                                                                                                                                                                                                     |              |                                                                                                                                    |             |                                                                                                                                            |            |             |            |             |             |              |            |             |
| <b>InfoprintServer_DEFAULT</b> | If eBit400 administrator has enabled IBM Infoprint Server (see parameter below), when user send manually a spool will be asked if he wants to send using InfoPrint or not, depending on the value of this parameter. Possible values are: <table border="0" style="margin-left: 20px;"> <tr><td><b>*YES:</b></td><td>Option *YES will appear by default (but he can change it).</td></tr> <tr><td><b>*NO:</b></td><td>Option *NO will appear by default (but he can change it).</td></tr> </table>                                                                                                       | <b>*YES:</b> | Option *YES will appear by default (but he can change it).                                                                         | <b>*NO:</b> | Option *NO will appear by default (but he can change it).                                                                                  |            |             |            |             |             |              |            |             |
| <b>*YES:</b>                   | Option *YES will appear by default (but he can change it).                                                                                                                                                                                                                                                                                                                                                                                                                                                                                                                                               |              |                                                                                                                                    |             |                                                                                                                                            |            |             |            |             |             |              |            |             |
| <b>*NO:</b>                    | Option *NO will appear by default (but he can change it).                                                                                                                                                                                                                                                                                                                                                                                                                                                                                                                                                |              |                                                                                                                                    |             |                                                                                                                                            |            |             |            |             |             |              |            |             |
| <b>InfoprintServer_SAVE</b>    | Spools sent to EBITPDF OUTQ are saved (*SAV) automatically or not depending this value. If spool has the SAVE attribute (* YES) this value is ignored and save the spool once processed and deposited in the same OUTQ EBITPDF. Possible values are: <table border="0" style="margin-left: 20px;"> <tr><td><b>*YES:</b></td><td>Spool is saved as SAVE(*YES) in EBITPDF OUTQ EBITPDF once processed.</td></tr> <tr><td><b>*NO:</b></td><td>Spool only will be save in EBITPDF OUTQ if attribute SAVE is set to *YES. The remaining spools are automatically deleted after processing.</td></tr> </table> | <b>*YES:</b> | Spool is saved as SAVE(*YES) in EBITPDF OUTQ EBITPDF once processed.                                                               | <b>*NO:</b> | Spool only will be save in EBITPDF OUTQ if attribute SAVE is set to *YES. The remaining spools are automatically deleted after processing. |            |             |            |             |             |              |            |             |
| <b>*YES:</b>                   | Spool is saved as SAVE(*YES) in EBITPDF OUTQ EBITPDF once processed.                                                                                                                                                                                                                                                                                                                                                                                                                                                                                                                                     |              |                                                                                                                                    |             |                                                                                                                                            |            |             |            |             |             |              |            |             |
| <b>*NO:</b>                    | Spool only will be save in EBITPDF OUTQ if attribute SAVE is set to *YES. The remaining spools are automatically deleted after processing.                                                                                                                                                                                                                                                                                                                                                                                                                                                               |              |                                                                                                                                    |             |                                                                                                                                            |            |             |            |             |             |              |            |             |
| <b>IP_AS400_LOCAL</b>          | EDefine iSeries path used to view attachments (PDF, TIF, TXT, XLS, RTF, HTML) using Cliente Access. An example, can be: <pre style="margin-left: 20px;">\\192.168.1.60\root</pre>                                                                                                                                                                                                                                                                                                                                                                                                                        |              |                                                                                                                                    |             |                                                                                                                                            |            |             |            |             |             |              |            |             |
| <b>MOD0_VISTA</b>              | Define which information will be shown in option 10 from menu Trabajar con Documentos. Possible values are: <table border="0" style="margin-left: 20px;"> <tr><td><b>0</b></td><td>Fields shown are: Type, Recipient(s), Subject, Actual Status, Last event, Sent, Server, Company, User, Date creation, Status info.</td></tr> <tr><td><b>1</b></td><td>Fields shown are: Type, Subject, Company, User, Status, Last event,</td></tr> </table>                                                                                                                                                          | <b>0</b>     | Fields shown are: Type, Recipient(s), Subject, Actual Status, Last event, Sent, Server, Company, User, Date creation, Status info. | <b>1</b>    | Fields shown are: Type, Subject, Company, User, Status, Last event,                                                                        |            |             |            |             |             |              |            |             |
| <b>0</b>                       | Fields shown are: Type, Recipient(s), Subject, Actual Status, Last event, Sent, Server, Company, User, Date creation, Status info.                                                                                                                                                                                                                                                                                                                                                                                                                                                                       |              |                                                                                                                                    |             |                                                                                                                                            |            |             |            |             |             |              |            |             |
| <b>1</b>                       | Fields shown are: Type, Subject, Company, User, Status, Last event,                                                                                                                                                                                                                                                                                                                                                                                                                                                                                                                                      |              |                                                                                                                                    |             |                                                                                                                                            |            |             |            |             |             |              |            |             |

Server, Sent, Recipients(s), Data creation, Status info.

**PageSize** Define format for documents processed as image (IMGTIF o IMGPCl). Possible values are:

|                   |                   |
|-------------------|-------------------|
| <b>*A4</b>        | DIN A4 format.    |
| <b>*LETTER</b>    | Letter format.    |
| <b>*LEGAL</b>     | Legal format.     |
| <b>*EXECUTIVE</b> | Executive format. |
| <b>*LEDGER</b>    | Ledger format.    |

#### **RecuperarSPOOLMANUAL\_width**

This parameter its important if **TEXT4**, **TXTPCA** o **TXTCLS** its selected in "ComoRecuperarSPOOLMANUAL" parameter: PDF generation depends of this value. Only applies for those spools in degrees of rotation have \* AUTO. Spool width is verified to check if value is less or equal to the value entered in this property, then the document will be generated VERTICA or PORTRAIT, but it will generate in HORIZONTAL or LANDSCAPE. By default: 132.

**RowsPagingWeb** Number of rows shown in each page when using client web interface (eBITWeb). Possible values are:

**número** Must be a number greater than zero.

#### **RutaArchivosTemporales**

Define IFS path where temp files are saved. Normally this folder must exist and should be empty.

#### **WorkstationObject\_DFT**

Define method used to manage spools sent manually. Possible values are:

|               |             |
|---------------|-------------|
| <b>IMGTIF</b> | TIF format. |
| <b>IMGPCl</b> | PCL format. |

#### **WorkstationObject\_IMGPCl**

Define which \*WSCST will be used for PCL conversion, when IMGPCl property is set. Possible values are:

**HP\_WSCST** \*WSCST \*LIBL/HP\_WSCST is used.  
**QWPHEURO**, other \*WSCST existing.

#### **WorkstationObject\_IMGTIF**

Define which \*WSCST will be used for TIF conversion, when IMGPCl property is set. Possible values are:

**QWPTIFFG4** \*WSCST \*LIBL/ QWPTIFFG4 is used.

Other \*WSCST existing.

# Working with digital signatures

*eBIT400* allows to sign digitally PDF generated.

In this chapter, will be explained how to add new digital signatures, to be used by *eBIT400* during PDF generation.

## In this chapter

---

- Working with Digital Signatures.
- Add a new Sign.
- Modify a Sign.
- Delete a Sign.

## Working with Digital Signatures

Menu *Trabajar con Firmas digitales* allows system administrator to access the screen from which you can update the list of firms available on the platform to be used to sign PDF documents.

### How to manage Digital Signatures

From **eBit400** main menu.

Select option **16** (Trabajar con Firmas digitales).

A screen similar this, will appear:

```

Trabajar con Firmas digitales

Teclé opciones, pulse Intro.
 1=Añadir 2=Cambiar 4=Suprimir 5=Visualizar 9=Autorizaciones

Opc FIRMA Fichero con la Firma Visible
- -----
- BITON Demobiton.pl2 1

Final

F3=Salir F5=Actualizar

```

| Specifications       | Meaning                                                                                                                                                       |
|----------------------|---------------------------------------------------------------------------------------------------------------------------------------------------------------|
| FIRMA                | Signature name.                                                                                                                                               |
| Fichero con la firma | Defines the name of the file containing the digital certificate provided by an entity certified / approved. File should be saved in <b>/biton/eBIT400/cfg</b> |
| Visible              | Defines if signature should be visible or not in PDF document.                                                                                                |



Menu options are described in the table below:

| Menu Option      | Its used to . . .                     |
|------------------|---------------------------------------|
| 1=Nueva          | Add a new signature.                  |
| 2=Modificar      | Modify signature attributes.          |
| 4=Suprimir       | Delete signature.                     |
| 5=Visualizar     | Shown signature attributes.           |
| 9=Autorizaciones | Shown users allowed to use signature. |

Possible function keys can be used, are described in the table below.

| Function key  | Sirve para                                        |
|---------------|---------------------------------------------------|
| F3=Salir      | Ends actual session and go back to previous task. |
| F5=Actualizar | Refresh information in actual screen.             |

## Add a Digital Signature in eBIT400 platform

Option *Añadir una Firma Digital* allows to add a Signature in **eBit400** platform to be used during PDF generation.

### How to add a Signature

1. From **eBIT400** administrator menu.
2. Select option **16** (Trabajar con Firmas digitales).
3. From screen *Trabajar con Firmas digitales* select option **1** and introduce signature name and path for file which contains digital certificate. A scree similar this will appear:

```

 Firma digital

Teclee elecciones, pulse Intro.
Firma BITON_____
Fichero DemoBiton.p12_____
Contraseña _____
Firma visible . . _ 1=Si, 0=No
Razón _____
Localización . . _____
Coordenadas . . . _____
Poner en página . 0000000000
Borde en firma . _ 1=Si, 0=No
Imagen _____

F12=Cancelar -INTRO- para aplicar cambios

```

| Field         | Its used to . . .                                                                                                                                                                                                                                                  |          |          |          |         |
|---------------|--------------------------------------------------------------------------------------------------------------------------------------------------------------------------------------------------------------------------------------------------------------------|----------|----------|----------|---------|
| Firma         | Signature name.                                                                                                                                                                                                                                                    |          |          |          |         |
| Fichero       | File which contains digital certificate.                                                                                                                                                                                                                           |          |          |          |         |
| Contraseña    | Password needed to use the digital certificate.                                                                                                                                                                                                                    |          |          |          |         |
| Firma visible | Allows to define if signature will be visible or not in PDF.<br>Possible values are:<br><br><table border="0"> <tr> <td style="padding-right: 20px;"><b>1</b></td> <td>Visible.</td> </tr> <tr> <td><b>0</b></td> <td>Hidden.</td> </tr> </table>                  | <b>1</b> | Visible. | <b>0</b> | Hidden. |
| <b>1</b>      | Visible.                                                                                                                                                                                                                                                           |          |          |          |         |
| <b>0</b>      | Hidden.                                                                                                                                                                                                                                                            |          |          |          |         |
| Razón         | Define text that will appear together signature. Optional.                                                                                                                                                                                                         |          |          |          |         |
| Localización  | Define text that will appear together signature in a second line. Optional.                                                                                                                                                                                        |          |          |          |         |
| Coordenadas   | Specifies coordinates where to insert the signature coordinates x (start, end) and y (start, end). By default: x(36,136) y(36,96). Values must be specified separated by semicolons (;).<br><br><p style="text-align: center;">x start; x end; y start; y end;</p> |          |          |          |         |

Possible function keys can be used, are described in the table below.

| Function key | Sirve para                                        |
|--------------|---------------------------------------------------|
| F3=Salir     | Ends actual session and go back to previous task. |
| F12=Cancelar | Go back to previous menu.                         |

## Modify a Signature

The system administrator can modify the values of any input. The changes will be carried out immediately.

### How to modify a Signature

1. From **eBIT400** main menu. Select option **16** (Trabajar con Firmas digitales).
3. From screen Trabajar con Firmas digitales select option **2** in entry that you want to modify.

A screen as described in section **Add a Digital Signature** will appear.

Once you have this screen you can proceed to make the appropriate adjustments in the various fields.

See section **Add a digital signature** in this chapter for more information on each of the fields on the screen.

## Delete a Digital Signature

When you do not want to use a digital signature, should be to remove from **eBIT400** platform. At the moment you remove the digital signature from eBIT400 it will be not longer available.

### How to delete a Digital Signature from eBIT400

1. From **eBIT400** menu administrator. Select option **16** (Trabajar con Firmas digitales).
2. From screen *Trabajar con Firmas digitales* select option **4** in signature that you want delete.
3. If you press Intro signature will be delete from eBit400 platform but not certificate file. With F12 function key, operation is aborted.

# Working with Dossiers

*eBIT400* allows to define the concept of Dossier to upload documents processed by the platform into our Document Manager (Alfresco).

In this chapter, will be explained how to add new Dossiers, in order to store documents in Alfresco.

## In this chapter

---

- Working with Dossiers.
- Add a new Dossier.
- Modify a Dossier.
- Delete a Dossier.

## Working with Dossiers

Option *Trabajar con Expedientes* allows the system administrator to access the menu from which you can update the list of Dossiers available on the platform.

### How to manage Dossiers

From **eBIT400** main menu. Select option **17** (Trabajar con Expedientes).

A screen similar this, will appear:

```

 Expedientes

Tecle opciones, pulse Intro.
 1=Crear 2=Editar 4=Eliminar 5=Ver

Opc Expediente Ruta del Expediente
-
- Exp_factura /app:company_home/cm:ebit400/cm:sample
- Exp_factura_asp /app:company_home/cm:ebit400/cm:sample
- Exp_factura_ocr /app:company_home/cm:ebit400/cm:sample
- EXP_FACTURA /app:company_home/cm:biton/cm:prim
- FAC_BUENO /app:company_home/cm:ebit400/cm:sample
- FAC_PARENTESIS /app:company_home/cm:ebit400/cm:sample
- VACIO /app:company_home/cm:ebit400/cm:biton

 Final

F3=Salir F5=Actualizar

```

| Specifications      | Meaning                                    |
|---------------------|--------------------------------------------|
| Expediente          | Dossier name.                              |
| Ruta del Expediente | Define path in Alfresco to store documents |

Menu options are described in the table below:

| Menu Option  | Its used to . . .           |
|--------------|-----------------------------|
| 1=Nuevo      | Add a new Dossier.          |
| 2=Modificar  | Modify Dossier information. |
| 4=Suprimir   | Delete a Dossier.           |
| 5=Visualizar | View Dossier attributes.    |

Possible function keys can be used, are described in the table below.

| Function key  | Sirve para                                        |
|---------------|---------------------------------------------------|
| F3=Salir      | Ends actual session and go back to previous task. |
| F5=Actualizar | Refresh information in actual screen.             |

## Add a Dossier in eBIT400 platform

Option Add a Dossier allows to add a dossier in **eBit400** platform to be used to store documents in Alfresco.

### Add a Dossier

- From **eBIT400** administrator menu.
- Select option **17** (Trabajar con Expedientes).
- From menu *Trabajar con Expedientes* select option **1** fill dossier name and Alfresco path fields; then a screen similar this will appear:

```

 EXPEDIENTE

Teclee elecciones, pulse Intro.
EXPEDIENTE . . . Exp_factura_____
RUTA /app:company_home/cm:ebit400/cm:sample_____

Name space . . . _____

Type name _____
WrkSPACE store . _____
Use Aspect . . . _ 1=Si, 0=No
Función ZINVOICE_WO_OCR_BC_____

Tipo documento . _____
Propiedades . . . _____

F12=Cancelar -INT para aplicar cambios

```

In this screen you have to enter all the settings that define this Dossier.

| Field               | Its used to . . . |
|---------------------|-------------------|
| Expediente          | Dossier name.     |
| Ruta del Expediente | Alfresco's path.  |
| Name Space          |                   |
| Type name           |                   |
| WrkSPACE store      |                   |
| Use aspect          |                   |
| Funcion             |                   |
| Tipo documento      |                   |
| Propiedades         |                   |

Possible function keys can be used, are described in the table below.

| Function key | Its used to . . .                                 |
|--------------|---------------------------------------------------|
| F3=Salir     | Ends actual session and go back to previous task. |
| F12=Cancelar | Go back to previous menu.                         |

## Modify a Dossier

*eBit400* administrator can modify any entry. Changes take effect immediatly.

### To modify a Dossier

1. From *eBIT400* main menu. Select option **17** (Trabajar con Expedientes).
4. From menu Trabajar con Expedientes select option **2** in dossier that you want to modify.

A screen as described in section **Add a Dossier** will appear.

Once you have this screen you can proceed to make the appropriate adjustments in the various fields.

See section **Add a Dossier** in this chapter for more information on each of the fields on the screen.

## Delete a Dossier

When you do not want to use a Dossier, should be to remove from *eBit400* platform. At the moment you remove the digital signature from eBIT400 it will be not longer available.

### To delete a Dossier

1. From *eBIT400* administrator menu. Select option **17** (Trabajar con Expedientes).

2. From menu *Trabajar con Expediente* select option 4 in Dossier that you want to delete.
3. If you press Intro, Dossier will be delete from eBit400 platform. With F12 function key, operation is aborted.



# Working with Templates

*eBIT400* allows to merge graphics in PDF documents, and use GDR templates to design documents from scratch, using our embedded Crystal Report technology.

## In this chapter

---

- Working with Templates.
- Add a Template.
- Modify a Template.
- Delete a Template.

## Working with Templates

Option *Trabajar con Expedientes* allows the system administrator to access the menu from which you can update the list of Templates available on the platform.

### How to manage Templates

From **eBIT400** main menu, select option **18** (Trabajar con Plantillas).

A screen similar this, will appear:

```

 Plantillas

Tecle opciones, pulse Intro.
 1=Crear 2=Editar 4=Eliminar 5=Ver

Opc Plantilla Nombre Tipo
- - -
- PCLCONV biton/pclConv GDR
- TEST Captura Spool/Test GDR

 Final

F3=Salir F5=Actualizar

```

#### Specifications

#### Meaning

|           |                                             |
|-----------|---------------------------------------------|
| PLANTILLA | Template name used in <b>eBit400</b> .      |
| NOMBRE    | Overlay or Esker path folder to be applied. |
| TIPO      | Template type.                              |

Menu options are described in the table below:

| Menu Option  | Its used . . .                 |
|--------------|--------------------------------|
| 1=Nueva      | To create a Template.          |
| 2=Modificar  | To modify a Template.          |
| 4=Suprimir   | To delete a Template.          |
| 5=Visualizar | To view a Template attributes. |

Possible function keys can be used, are described in the table below.

| Function key  | Its used to . . .                                 |
|---------------|---------------------------------------------------|
| F3=Salir      | Ends actual session and go back to previous task. |
| F5=Actualizar | Refresh information in actual screen.             |

## Add a Template in eBIT400 Platform

Option *Añadir una Plantilla* allows to add a Template in order to be used by **eBit400** platform.

### How to add a Template

1. From **eBIT400** administrator menu.
2. Select option **18** (Trabajar con Plantillas).
3. From menu *Trabajar con Plantillas* select option **1** and type Template name and path folder in Esker server (Nombre filed). A screen similar this, will appear:

```

 Plantilla

Teclee elecciones, pulse Intro.
Plantilla PCLCONV__
Nombre biton/pclConv__
Tipo plantilla . GDR__ F4=Lista
Parámetro _____
Descripción . . Conversion JETPCL en Esker____
Texto _____

F12=Cancelar -INTRO- para aplicar cambios

```

| Field          | Its used to . . .                                                                                                                                                                                                                                                                                                                                                  |     |                         |     |                           |     |                                                                    |     |                                 |
|----------------|--------------------------------------------------------------------------------------------------------------------------------------------------------------------------------------------------------------------------------------------------------------------------------------------------------------------------------------------------------------------|-----|-------------------------|-----|---------------------------|-----|--------------------------------------------------------------------|-----|---------------------------------|
| Plantilla      | Template name introduced in previous screen.                                                                                                                                                                                                                                                                                                                       |     |                         |     |                           |     |                                                                    |     |                                 |
| Nombre         | Template path folder in Esker server.                                                                                                                                                                                                                                                                                                                              |     |                         |     |                           |     |                                                                    |     |                                 |
| Tipo plantilla | Template type: <table border="0" style="margin-left: 20px;"> <tr> <td>GDR</td> <td>Esker GDR rule applied.</td> </tr> <tr> <td>ALF</td> <td>Attach files in Alfresco.</td> </tr> <tr> <td>PCX</td> <td>PCX Overlay (black &amp; white): only to be used with PCL attachments.</td> </tr> <tr> <td>PDF</td> <td>PDF formatting (JPG, PNG, ...).</td> </tr> </table> | GDR | Esker GDR rule applied. | ALF | Attach files in Alfresco. | PCX | PCX Overlay (black & white): only to be used with PCL attachments. | PDF | PDF formatting (JPG, PNG, ...). |
| GDR            | Esker GDR rule applied.                                                                                                                                                                                                                                                                                                                                            |     |                         |     |                           |     |                                                                    |     |                                 |
| ALF            | Attach files in Alfresco.                                                                                                                                                                                                                                                                                                                                          |     |                         |     |                           |     |                                                                    |     |                                 |
| PCX            | PCX Overlay (black & white): only to be used with PCL attachments.                                                                                                                                                                                                                                                                                                 |     |                         |     |                           |     |                                                                    |     |                                 |
| PDF            | PDF formatting (JPG, PNG, ...).                                                                                                                                                                                                                                                                                                                                    |     |                         |     |                           |     |                                                                    |     |                                 |
| Parámetro      | Not used.                                                                                                                                                                                                                                                                                                                                                          |     |                         |     |                           |     |                                                                    |     |                                 |
| Descripción    | Template description.                                                                                                                                                                                                                                                                                                                                              |     |                         |     |                           |     |                                                                    |     |                                 |
| Texto          | Text that will appear in help menus.                                                                                                                                                                                                                                                                                                                               |     |                         |     |                           |     |                                                                    |     |                                 |

Possible function keys can be used, are described in the table below.

| Function key | Sirve para                                        |
|--------------|---------------------------------------------------|
| F3=Salir     | Ends actual session and go back to previous task. |
| F12=Cancelar | Go back to previous menu.                         |

## Modify a Template

*eBit400* administrator can modify any entry. Changes take effect immediatly..

### How to modify a Template

1. From *eBIT400* main menu. Select option **18** (Trabajar con Plantillas).
2. From menu Trabajar con Plantillas select option **2** in template that you want to modify.

Se mostrará una pantalla como la descrita en el Apartado **AÑADIR una nueva Plantilla**.

A screen as described in section **Add a Template** will appear.

Once you have this screen you can proceed to make the appropriate adjustments in the various fields.

See section **Add a Template** in this chapter for more information on each of the fields on the screen.

## Delete a Template

When you do not want to use a Dossier, should be to remove from *eBit400* platform.

### To delete a Template

1. From **eBIT400** administrator menu. Select option **18** (Trabajar con Plantillas).
2. From menu *Trabajar con Plantillas* select option **4** in Template that you want to delete.
3. If you press Intro, Dossier will be delete from eBit400 platform. With F12 function key, operation is aborted.

## Working with spools

Menu option Trabajar con Listados o Spools allows user to manage own reports (or from a group if he has rights) in order to send it by faxm eMail or Dossier.

There are several ways to use **eBIT400** tools to send spools:

- Sending any spool from a Outq predefined..
- With SNDEBSPLF command
- With SNDCOLSPLF command
- With WRKBISPLF command

### **In this chapter**

---

- Sending a spool manually.
- Sending a spool automatically.
- Using licpgm 5761 IP1- IBM Infoprint server for iSeries
- Using licpgm 5761 TS1- IBM Transform Services for i5/OS

## Sending a spool manually

eBIT400 allows users to send his own spools either by Fax, eMail or Dossier. By eMail, spool is sent as attachment in PDF, TIF, HTML, TXT, RTF o XLS format , depends if spool is \*SCS, \*AFPDS o \*USERASCII) with a maximum of 50 spools in each transmission. Both by fax and by eMail allows you to include an explanatory text.

### How to manage Spools

- 1 From eBIT400 main menu. Select option 11 (Trabajar con Spools).
- 2 From option F7 in menu Trabajar con Documentos.
- 3 From WRKBISPLF command

A screen similar this, will appear:

```

Trabajar con archivos de Spool del Usuario

Usuario *CURRENT__ Nombre, *CURRENT, F4
o
Cola de Salida . . *ALL_____ Nombre. *ALL
Biblioteca . . . *LIBL_____

Formulario *ALL_____ Nombre, *ALL

F12=Cancelar

```

| Specifications | Meaning                                                                                                                                                                                                                      |
|----------------|------------------------------------------------------------------------------------------------------------------------------------------------------------------------------------------------------------------------------|
| Usuario        | By default appears *CURRENT, it means, actual user. ly you have administrator rights, you can select another user. *ALL allows to manage all spools that user has rights. With F4 you can see all users that you can manage. |
| Cola de Salida | By default *ALL, it means all outqs. You can introduce a OUTQ/LIBRARY to refine search.                                                                                                                                      |
| Formulario     | By default *ALL, it means, all files in spool selected. You can introduce a form name, to refine search.                                                                                                                     |

Possible function keys can be used, are described in the table below.

| Function key | Its used to . . .                                |
|--------------|--------------------------------------------------|
| F12=Cancelar | Ends actual session and go back to previus task. |

A screen similar this, will appear:

```

WRKBISPLF Trabajar con Archivos de Spool QSECOFR S653E862

Teclee opciones, pulse INTRO.
 1=Enviar 2=Cambiar 3=Retener 4=Suprimir 5=Visualizar 6=Liberar
 8=Atributos 9=Trabajar con estado de impresión
 E=Enviar eMail F=Enviar Fax G=Enviar Fax agrup. D=Enviar Archive

Opc Archivo Usuario Disp/Cola Datos Usu Est Págs Total Cop

```

|                                                         |           |         |          |            |        |    |       |
|---------------------------------------------------------|-----------|---------|----------|------------|--------|----|-------|
| -                                                       | QSYSVRT   | QSECOFR | PRT01    |            | *READY | 1  | 1     |
| -                                                       | QPQUPRFIL | QSECOFR | PRT01    |            | *READY | 5  | 1     |
| -                                                       | QPDSPLIB  | QSECOFR | DEMOS    |            | *READY | 5  | 1     |
| -                                                       | LFAC      | QSECOFR | OK       | ENVIO      | *READY | 1  | 1     |
| -                                                       | LCDVE1    | QSECOFR | DEMOS    | E0044N     | *HELD  | 12 | 1     |
| -                                                       | QPRINT    | QSECOFR | DEMOS    |            | *SAVED | 2  | 1     |
| -                                                       | QSYSVRT   | QSECOFR | DEBUG    | TEST_SPOOL | *SAVED | 1  | 1     |
| -                                                       | QSYSVRT   | QSECOFR | DEBUG    | TEST_SPOOL | *SAVED | 1  | 1     |
| -                                                       | QPRINT    | QSECOFR | FACTURAS |            | *SAVED | 2  | 1     |
|                                                         |           |         |          |            |        |    | Final |
| F3=Salir F5=Renovar F11=Vista 2 F17=Principio F18=Final |           |         |          |            |        |    |       |

In this screen appear all spools that user has selected. As you can see, is very similar to WRKSPLF command.

### From this menu you can . . .

---

- Send a spool by internal messaging.
- Send a spool by Fax.
- Send a spool by eMail.
- Send a spool to Dossier.
- Hold a spool.
- Delete a spool.
- View a spool.
- Release a spool.
- View spool attributes.



### Send a spool by internal messaging

With option 1 = *Enviar* any spool selected on the list will allow us to send it using internal messaging (usually to another user from another IBM system i). You can search for WRKSPLF system command in IBM i documentation for extra information.

### Sending an spool by fax

Option **F** allows to send by fax spool selected; a maximum of 50 spools can be sent in one transmission with option **G**.

### Sending a spool by fax manually

1. From WRKBISPLF menu select a spool with option **F** or **G** (or both).

A screen similar this, will appear:

```

eBIT400 Enviar un FAX 12:10:38
Asunto:

EXPEDIENTE : *NONE F4=Lista
Cubierta de página : *NONE F4=Lista
Mezclar gráfico .. : *NONE F4=Lista
Logo Cabecera : *NONE F4=Lista

Fax N°: _____ F4=Lista

De: _____

A: _____

Ha seleccionado 1 archivos . Pulse F14 para ver la lista
F3=Salir F7=Editar Cover F8=Editar Texto F10=Enviar F14=Ver spool(s)

```

| Specifications     | Meaning                                                                                                                                             |
|--------------------|-----------------------------------------------------------------------------------------------------------------------------------------------------|
| Asunto             | Subject of this message.                                                                                                                            |
| Expediente         | If you have access, with F4 its possible to select Dossier in Alfresco, where to save the document after transmission.                              |
| Cubierta de Página | Cover page to be used. With F4 its possible to select a Cover Page o *NONE. Its also possible to add text in the Cover Page, using F8 function key. |
| Mezclar Gráfico    | Overlay to be used. It should be defined before by <b>eBit400</b> administrator. With value *NONE, no overlay will be used.                         |

|            |                                                                                   |
|------------|-----------------------------------------------------------------------------------|
| Fax Número | Fax number to send the fax. With F4, allows to select recipient form addressbook. |
| De         | From field used to fill in the Cover Page.                                        |
| A          | To field used to fill in the Cover Page.                                          |

Possible function keys can be used, are described in the table below.

| <b>Function key</b> | <b>Its used to . . .</b>                                                                                                                                                                         |
|---------------------|--------------------------------------------------------------------------------------------------------------------------------------------------------------------------------------------------|
| F3=Salir            | Ends actual session and go back to previous task.                                                                                                                                                |
| F7=Editar Cover     | If Cover Page is selected, with F7 function key its possible to fill a message to include in Cover Page.                                                                                         |
| F8=Editar Texto     | <b>eBIT400</b> has an embedded basic editor, to write a text message to send by fax: it will appear in the first page.                                                                           |
| F10=Enviar          | After to press F10 function key to send the fax message, appears a screen where is possible to deferred transmission. Finally, with option <b>S</b> , fax is sent to fax server to be processed. |
| F14=Ver spool(s)    | After to press F14 function key, appears spool selected in previous menu, where its possible to modify format transmission.                                                                      |

## Sending a spool by eMail

Option **G** allows to send by eMail spool selected; a maximum of 50 spools can be sent in one transmission.

### Sending a spool by eMail manually

1. From WRKBISPLF menu select a spool with option **E**.

A screen similar this, will appear:

Enviar un eMAIL 12:35:52

---

De: soporte@biton.es

---

Asunto: \_\_\_\_\_

Expediente : \*NONE \*NONE, Nombre F4=Lista

Firma Electrónica: \*NONE \*NONE, Nombre F4=Lista

Logo Cabecera : \*NONE \*NONE, Nombre F4=Lista

Overlay ..... : \*NONE \*NONE, Nombre F4=Lista

A: \_\_\_\_\_ F4  
 \_\_\_\_\_ F4  
 \_\_\_\_\_ F4  
 Más...

CC: \_\_\_\_\_ F4  
 \_\_\_\_\_ F4  
 \_\_\_\_\_ F4  
 Más...

Bcc: \_\_\_\_\_ F4  
 \_\_\_\_\_ F4  
 Más...

Ha seleccionado 1 archivos . Pulse F14 para ver la lista

F3=Salir    F8=Editar Texto    F10=Enviar    F14=Ver spool(s)

| Specifications    | Meaning                                                                                                                                                                                            |
|-------------------|----------------------------------------------------------------------------------------------------------------------------------------------------------------------------------------------------|
| De                | By default appears eMail address assigned in <b>eBIT400</b> .                                                                                                                                      |
| Asunto            | eMail subject.                                                                                                                                                                                     |
| Expediente        | If you have access, with F4 its possible to select Dossier in Alfresco, where to save the document after transmission.                                                                             |
| Firma Electrónica | Allow to select Digital Signature to add in PDF file. With F4 function key, will appear all digital signature that you are granted to manage. With value *NONE, no digital signature will be used. |
| Logo Cabecera     | Image to add in each page. It should be defined before by <b>eBit400</b> administrator. With value *NONE, no image will be used.                                                                   |
| Overlay           | Overlay to be used. It should be defined before by <b>eBit400</b> administrator. With value *NONE, no overlay will be used.                                                                        |

|     |                                                                                                                                               |
|-----|-----------------------------------------------------------------------------------------------------------------------------------------------|
| A   | Recipient to send eMail. With F4, allows to select recipients form addressbook. A maximum of 60 address are allowed.                          |
| CC  | Carbon Copy (CC) recipients to send eMail. With F4, allows to select recipients form addressbook. A maximum of 60 address are allowed.        |
| BCC | Blind Carbon Copy (BCC) recipients to send eMail. With F4, allows to select recipients form addressbook. A maximum of 30 address are allowed. |

Possible function keys can be used, are described in the table below.

| Function key     | Its used to . . .                                                                                                                                                                                                                                                                                                                              |
|------------------|------------------------------------------------------------------------------------------------------------------------------------------------------------------------------------------------------------------------------------------------------------------------------------------------------------------------------------------------|
| F3=Salir         | Ends actual session and go back to previous task.                                                                                                                                                                                                                                                                                              |
| F8=Editar Texto  | <b>eBIT400</b> has an embedded basic editor, to write a text message to send by fax: it will appear in the first page.                                                                                                                                                                                                                         |
| F10=Enviar       | After to press F10 function key to send the fax message, appears a screen where is possible to deferred transmission. Finally, with option <b>S</b> , fax is sent to fax server to be processed.                                                                                                                                               |
| F14=Ver spool(s) | After to press F14 function key, appears spool list selected in previous menu, where its possible to modify format transmission. There are two option: <ol style="list-style-type: none"> <li>1 Define attach name.</li> <li>2 Define spool format: PDF (by default), TIF, HTML, TXT, RTF (Microsoft Word) y XLS (Microsoft Excel).</li> </ol> |

### Sending a spool into a Dossier

Option D allows to send spool selected into a Dossier; a maximum of 50 spools can be sent in one transmission.

### Sending a spool into a Dossier manually

1. From WRKBISPLF menu select a spool with option **D**.

A screen similar this, will appear:

```

Enviar un Archive 12:35:52

De: soporte@biton.es
Expediente : *NONE *NONE, Nombre F4=Lista
Asunto:
Firma Electrónica: *NONE *NONE, Nombre F4=Lista
```

```

Logo Cabecera : *NONE
Overlay : *NONE
Path : _____

Ha seleccionado 1 archivos . Pulse F14 para ver la lista

F3=Salir F10=Enviar F14=Ver spool(s)

```

| Specifications    | Meaning                                                                                                                                                                                            |
|-------------------|----------------------------------------------------------------------------------------------------------------------------------------------------------------------------------------------------|
| De                | By default appears eMail address assigned in <b>eBIT400</b> .                                                                                                                                      |
| Expediente        | If you have access, with F4 its possible to select Dossier in Alfresco, where to save the document after transmission.                                                                             |
| Asunto            | Dossier document subject                                                                                                                                                                           |
| Firma Electrónica | Allow to select Digital Signature to add in PDF file. With F4 function key, will appear all digital signature that you are granted to manage. With value *NONE, no digital signature will be used. |
| Logo Cabecera     | Image to add in each page. It should be defined before by <b>eBit400</b> administrator. With value *NONE, no image will be used.                                                                   |
| Overlay           | Overlay to be used. It should be defined before by <b>eBit400</b> administrator. With value *NONE, no overlay will be used.                                                                        |
| Path              | Define path in Alfresco to store document.                                                                                                                                                         |

Possible function keys can be used, are described in the table below.

| Function key     | Its used to . . .                                                                                                                                                                                |
|------------------|--------------------------------------------------------------------------------------------------------------------------------------------------------------------------------------------------|
| F3=Salir         | Ends actual session and go back to previous task.                                                                                                                                                |
| F10=Enviar       | After to press F10 function key to send the fax message, appears a screen where is possible to deferred transmission. Finally, with option <b>S</b> , fax is sent to fax server to be processed. |
| F14=Ver spool(s) | After to press F14 function key, appears spool list selected in previous menu, where its possible to modify format transmission. There are two option:                                           |

- 1 Define attach name.

- 2 Define spool format: PDF (by default), TIF, HTML, TXT, RTF (Microsoft Word) y XLS (Microsoft Excel).

### Change spool attributes

Option 2 allows to modify spool attributes, such as the range of pages to print, number of copies, et.

### Hold a spool

Option 3 allows to hold a spool.

### Release a spool

Option 6 allows to release a spool.

### Delete a spool

Option 4 allows to delete a spool.

### View a spool

Option 5 allows to view spool content.

### View spool attributes

Option 8 allows to view spool attributes such as Form, LPIs, CPIs, USRDFNDTA, and spool type: \*SCS, \*AFPDS, \*USERASCII ....

## Send a spool automatically

Frequently, IBM i users and administrators have had the need to send by fax / mail a spool (which can be either a list, customer information, invoice with company logo, a listing of contents of a library, etc.). This usually had to run first the program that makes the list and then had to print to a printer.

*eBIT400* provides tools for those tedious operations. These tools are an API built into the application that allows you to send spools to recipients in a very easy way.

*eBIT400* allows to manage and sent spool in different ways, that we will detail in this chapter.

### In this chapter

---

- Sending a spool with embedded codes.
- Outq EBIT/SND commands.
- USRDFNDA parameters.
- How to send a spool to several fax/eMail recipients.
- Compatibility with FAXPLUS © de Saytel.

## Sending a spool with embedded codes.

One way to send a spool is incorporated into the first line of text spool file (but not in this first line, because eBIT400 searches anywhere in the spool) a series of embedded commands will determine which kind of transmission should be done.

The ability to send a spool using command line or embedded codes is an API very useful for all programmers and software developers who want to add new features to his applications.



Sending spool files using a command line or embedded codes is reserved for iSeries programmers; they have to adapt the programs that created the spool file and add a first line (or more) with **eBit400** commands.

In EBIT library there is a OUTQ called SND. If you wish, you can create another OUTQ in QUSRSYS library to which users can send from Windows environment, Word documents, Excel, etc. printing directly to a printer defined with Client Access and pointing to that OUTQ..

That OUTQ process all spool that you want to send to their recipients, by fax, email, archiving method, etc ... That is why this output queue will be the bridge between the spool file generated by an application, and **eBIT400**.

Any spool sent to EBIT/SND or QUSRSYS/xxx can be managed as another spool in IBM i platform: hold, release, delete, view, etc..

---

**Nota** To send a spool by fax, eMail or Dossier just send it to EBIT/SND OUTQ.

---

At the time a spool file is placed in the Output Queue EBIT / SND, eBIT400 makes a search (if its not in hold status or is \* AFPDS or \* USRASCII type) to find recipients as . FX (fax) or. XM (for email) or. SX (for SMS \*) or. XX (to Dossier); if its not found any command, then **eBit400** will try to find recipients in the USRDFNDDTA spool attribute (see section "More embedded codes), and finally if no recipients are found, spool is move to EBIT/ERROR OUTQ. If spool has SAVE(\*YES) attribute, spool will be move to EBIT/OK OUTQ after to be processed.

If EBIT/SND OUTQ is in HOLD status, spools will not be processed until the queue is released.

## Commands to send spools

### Points to consider:

- Each spool must have at least a command line (only for spools \* SCS) or command in USRDFNDDTA. The command line can be anywhere in the text.
- Each spool can have more than one command line. It processes each one with your recipient type, ie, you can mix different types of recipients (fax and email for example) in the same spool. The line containing the command line will be replace with blanks.
- Only in \*SCS spools its possible to send each page to different recipients.



- **eBIT400** allows to specify a range pages to send.
- **eBIT400** process spools as text (Outq define with TEXTO attribute o TEXTA4) or as image in PCL5 (Outq define wit IMGPCl attribute) or TIF (Outq define with IMG TIF attribute).
- **eBIT400** allows to use USRDFN DTA field attribute to specify commands; we encourage to use this method integration.

You can see in table below, all possible combinations:

|                  | <u>*SCS</u>                         | <u>*AFPDS</u>  | <u>*USERASCII</u> |
|------------------|-------------------------------------|----------------|-------------------|
| <u>Fax</u>       | Yes<br>Pdf/Tif                      | Yes<br>Pdf/Tif | Yes<br>Pdf/Tif    |
| <u>eMail</u>     | Yes<br>Pdf/Html/Txt/Rtf/<br>XLS/Tif | Yes<br>Pdf/Tif | Yes<br>Pdf/Tif    |
| <u>Archivado</u> | Yes<br>Pdf/Html/Txt/Rtf/<br>XLS/Tif | Yes<br>Pdf/Tif | Yes<br>Pdf/Tif    |

## SUPPORTED COMMANDS

Below are all the commands that **eBit400** can recognize.

### Transmission Type

Command:

**.FX** ó **.fx** Fax.  
**.XM** ó **.xm** eMail.  
**.XXPATH=""** or  
**.xxpath=""** Dossier

Used to specify whether the spool is sent by fax, email or dossier method. You can use either combinations (upper or lower case) for each transmission type.

### REPIENT(S)

Specifies recipient to whom its sent spool. Can be a fax number, a Path or email address depending on the type of transmission selected.

Recipient must be followed by semicolon (;) if more than one fax recipient is wished. For eMail recipients, should be used comma (,)

Examples:

**.fx934445566;** A fax will be sent to **934445566**.  
**.xmjsaenz@biton.es;** An eMail will be sent to **jsaenz@biton.es**  
**.xmjcarreras@biton.es,soporte@biton.es ;**  
 An eMail will be sent to **jcarreras@biton.es** and **soporte@biton.es**  
**.xxpath=\\PC003\AS400;** A Dossier will be sent to **\\PC003\AS400** path

---

**COMPANY**

Command:

**EMP=xxx,** Specify company

Allows to specify which attributes should be used in transmission, defined in COMPANY profile. XXX is company attribute.

EMP= command is valid for any kind of transport (Fax, eMail, SMS, etc).

Example:

**EMP=MS,** Spool will be assigned to MS company.

---

**CC (eMail) RECIPIENT(s)**

Command:

**CC=direccion@email;** Specify cc eMail address.

Specify eMail CC recipient (Carbon Copy). You can define as many CC as you want.

Example:

**CC=sbenach@biton.es;** eMail copy will be sent to [sbenach@biton.es](mailto:sbenach@biton.es)

---

**BCC (eMail) RECIPIENT(s)**

Command:

**BC=direccion@email;** Specify bcc eMail address

Specify eMail BCC recipient (Blind Carbon Copy). You can define as many BCC as you want.

Example:

**BC=jsaenz@biton.es;** eMail blind copy will be sent to [jsaenz@biton.es](mailto:jsaenz@biton.es)

---

**HEADER LOGO**

Command:

**CAB=xxxxxxxx,** Specify logo

Specify this command if you want to add a header logo. Must specify a Logo defined in **eBit400** configuration. Logo appears only on the first page. If you dont want any logo, you must specify CAB = \*NONE

This command is only valid for Fax, eMail and Dossier transmission.

Example:

**CAB=biton,**

BITON logo will be append in the first page.

---

## OVERLAY

Comando:

**OVL=xxxxxxx,**  
**OVR=xxxxxxx,**

overlay to use  
overlay to use

Specify this command if you want to use a graphic as overlay. Must specify a graphic defined in **eBit400** configuration. Overlay appears in all pages. If you dont want any overlay, you must specify **OVL=\*NONE o OVR=\*NONE**.

This command is only valid for Fax, eMail and Dossier transmission.

Example:

**OVL=albaran1,**  
**OVR=albaran2,**

More information in section "*Images in spools* " in this chapter.

---

**DOCUMENT REFERENCE**

Command:

**REF="xxxx.....xxxx",**

This command allows to define document reference; its useful to identify the document later on.

Reference has a maximum of 75 positions. The command is valid for any kind of message.

If reference its not specified, **eBit400** automatically assigns a reference as follows:

**File\_NumJob\_User\_Job.NumSpool**

Example:

**REF="S/Factura N° 12533/2002",**

---

**TIME DELAY**

Command:

**TIME=hmmss**

Allows to send spool at specific time. The command is valid for any kind of message. Its not possible to use together DATE command.

Format should be hmmss (hour minute seconds). If this command its not specified, message is sent as soon as possible.

Example:

**TIME=230000**                      Spool will be sent at 23:00:00.

---

**DATE DELAY**

Command:

**DATE=ddmmaaaa<blank>hmmss**

Allows to send spool at specific date/time. The command is valid for any kind of message. Its not possible to use together TIME command.

Format should be ddmmaaaa (day month year) and hmmss (hour minute seconds). If this command its not specified, message is sent as soon as possible.

Example:

**DATE=31082010 0900**                      Spool will be sent 31 August 2010 at 9:00.

---

**TAG1**

Command:

**TAG1="text",**

Allows to define Tag1 field, used only in Esker module to personalize notifications.

Example:

**TAG1="Jordi Carreras",**

---

**TAG2**

Command:

**TAG2="text",**

Allows to define Tag1 field, used only in Esker module to personalize notifications.

Example:

**TAG2="Bit ON Consultores, S.L.",**

---

**OWNER**

Command:

**USU=perfil\_de\_usuario,**

Allows to define document owner. The command is valid for any kind of message.

Example:

**USU=QPGMR,**                      Spool be owned by QPGMR, regardless of who has generated.

---

**DIGITAL SIGNATURE**

Command:

**SIG="digital\_signature"**

Allows to define a digital signature, if attachment output is PDF. Spool user owner must have rights to use signature selected. This command is only valid for eMail and Dossier.

Example:

**SIG="BITON"**                      BITON digital signature will be used to create PDF.

---

**DOSSIER PATH**

Command:

**PATH="dossier\_path"**

Specify dossier path to save the document (<max. 256 characters>). If PATH doesn't exist, it will be created automatically. This command is only for Dossier transport.

Example:

**PATH="\\PC003\AS400"** Document will be saved in <\\PC003\AS400>.

---

**DOCUMENT NAME in DOSSIER**

Command:

**NAME="document\_name"**

Specify document name in dossier transport (<max. 50 characters>). This command is only for Dossier transport.

Example:

**NAME="Invoice number 325"** Document will be saved with name "Invoice number 325".

---

**SPOOL FORMAT**

Command:

**FMT=\*PDF (\*DFT,\*HTM,\*TXT,\*RTF,\*XLS,\*TIF)**

This command allows to define spool format when sent by eMail or Dossier.

Options can be: \*DFT (see chapter Definir Valores By default), \*PDF, \*HTM, \*RTF, \*XLS or \*TXT.

If this command is not specified, \*DFT will be used.

Example:

**FMT=\*PDF**

## Summary List

|                  | <u>Description</u>              | <u>Fax</u> | <u>eMail</u> | <u>Dossier</u> |
|------------------|---------------------------------|------------|--------------|----------------|
| <b>.FX / .fx</b> | Fax number                      | <b>Si</b>  |              |                |
| <b>.XM / .xm</b> | eMail address (comma delimited) |            | <b>Si</b>    |                |
| <b>.XXPATH=</b>  | Dossier path                    |            |              | <b>Si</b>      |
| <b>USU=</b>      | User owner                      | <b>Si</b>  | <b>Si</b>    | <b>Si</b>      |
| <b>EMP=</b>      | Company code for this document  | <b>Si</b>  | <b>Si</b>    | <b>Si</b>      |
| <b>CAB=</b>      | Logo header                     | <b>Si</b>  | <b>No</b>    | <b>No</b>      |
| <b>OVL=</b>      | Overlay graphic (JPG or PNG)    | <b>Si</b>  | <b>No</b>    | <b>No</b>      |
| <b>REF=</b>      | Document reference.             | <b>Si</b>  | <b>Si</b>    | <b>Si</b>      |
| <b>TAG1=</b>     | TAG1 for notification           | <b>Si</b>  | <b>Si</b>    | <b>Si</b>      |
| <b>TAG2=</b>     | TAG2 for notification           | <b>Si</b>  | <b>Si</b>    | <b>Si</b>      |
| <b>TIME=</b>     | Time delay                      | <b>Si</b>  | <b>Si</b>    | <b>Si</b>      |
| <b>DATE=</b>     | Date/time delay                 | <b>Si</b>  | <b>Si</b>    | <b>Si</b>      |
| <b>SIG=</b>      | Digital signature               | <b>No</b>  | <b>Si</b>    | <b>Si</b>      |
| <b>FMT=</b>      | Attachment output format        | <b>No</b>  | <b>Si</b>    | <b>Si</b>      |
| <b>CC=</b>       | Carbon Copy eMail address       |            | <b>Si</b>    |                |
| <b>BC=</b>       | Blind carbon copy eMail address |            | <b>Si</b>    |                |



## Using USRDFNDA

At the time prior to create a spool and send it to the OUTQ SND, you can make a change printer file you are creating and specify in **USRDFNDA** attribute, the following values:

| ATTRIBUTE                       | DESCRIPTION                                                                                                                                                                                                                           |
|---------------------------------|---------------------------------------------------------------------------------------------------------------------------------------------------------------------------------------------------------------------------------------|
| <b>REF</b> ="reference"         | Document reference; if transmission type is eMail, this name is used for attachment.                                                                                                                                                  |
| <b>USU</b> ="user_perfil"       | Define document owner.                                                                                                                                                                                                                |
| <b>FAX</b> ="fax number"        | Fax number; multiples values should be comma delimited.                                                                                                                                                                               |
| <b>MAIL</b> ="dir@correo.es"    | eMail address; multiples values should be comma delimited.                                                                                                                                                                            |
| <b>MAILCC</b> ="dir@correo.es"  | Carbon copy eMail address; multiples values should be comma delimited.                                                                                                                                                                |
| <b>MAILBCC</b> ="dir@correo.es" | Blind carbon copy eMail address; multiples values should be comma delimited                                                                                                                                                           |
| <b>PATH</b> ="Dossier_path"     | Dossier path.                                                                                                                                                                                                                         |
| <b>NAME</b> ="Dossier_name"     | Dossier document name.                                                                                                                                                                                                                |
| <b>OVL</b> ="overlay"           | Overlay.                                                                                                                                                                                                                              |
| <b>CAB</b> ="header_graphic"    | Logo graphic.                                                                                                                                                                                                                         |
| <b>PIE</b> ="footer_graphic"    | Footer graphic.                                                                                                                                                                                                                       |
| <b>TAG1</b> ="tag_1"            | TAG1 for notification. Only used in Esker module notification (<max. 50 characters>).                                                                                                                                                 |
| <b>TAG2</b> ="tag_2"            | TAG2 for notification. Only used in Esker module notification (<max. 50 characters>).                                                                                                                                                 |
| <b>SIG</b> ="digital_signature" | Allows to define a digital signature, if attachment output is PDF. Spool user owner must have rights to use signature selected. This command is only valid for eMail and Dossier. (<max. 10 characters>).                             |
| <b>EMP</b> ="Company"           | Company code (3 digits). This code must exist in <b>eBit400</b> configuration.                                                                                                                                                        |
| <b>FMT</b> ="attachment_format" | Attachment output format. Possible options are:<br><b>PDF</b> Adobe PDF<br><b>TIF</b> Tiff<br><b>HTM</b> Hiper Text Markup Language (*SCS)<br><b>TXT</b> Text (*SCS)<br><b>RTF</b> Rich Text Format (*SCS)<br><b>XLS</b> Excel (*SCS) |

NOTA: Spaces between parameters are not needed nor is it important the order specified.

## How to send Fax/eMail/Dossier to multiple recipients

Its possible to send any spool to multiple recipients, if attribute PROCESAR COMO: is set to TEXTO.

### How to do it?

In each command found (. FX. XM or. XX), eBit400 interprets that until next command, all pages between are sent to recipient(s) selected.

#### Examples

This example shows a spool with two pages, with a command in each page:

Fist page will be sent to fax number 933569658 y and second page will be sent by eMail to soporte@Biton.es

```
.FX933569658;REF="Albarán de entrega N° 2010/08" Pág. 1
Línea primera del texto del spool
Línea seguna del texto del spool
Línea tercera del texto del spool
...
...
.../...
```

```
.XMsoporte@biton.es;REF="Albarán de entrega N° 2010/128" Pág. 2
Línea primera del texto del spool
Línea seguna del texto del spool
Línea tercera del texto del spool
...
...
.../...
```

## 5761 IP1 - IBM Infoprint Server for iSeries.

eBit400 has integration with *5761 IP1 IBM Infoprint Server for iSeries software*. In this chapter we explain how take advantage of the quality of spools conversions with Infoprint Server tool.

### Configuring eBit400 to use Infoprint

If customer has installed *5761 IP1 IBM Infoprint Server for iSeries software*, **eBit400** administrator must follow next steps to use it in **eBit400** conversions:

- Add (or modify if exist) "**InfoprintServer**" property in option 13 **eBit400** main menu and set value "1" (enabled).
- Stop/Start **eBit400** subsystem.

System is responsible for setting up the objects required for the link between eBIT400 and Infoprint Server. It creates a device called EBITPDF and OUTQ QUSRSYS / EBITPDF, which are automatically activated when starting the subsystem EBIT400 and also the property "InfoprintServer" is defined and activated. See Settings section for more detail on the properties "InfoprintServer\_DEFAULT" and "InfoprintServer\_SAVE".

### Sending spools \*SCS, \*AFPDS y \*IPDS manually

If "InfoprintServer" property is enable, when user send manually a spool, he will see a popup window asking if he wants to send it by InfoPrint or by the conventional method. By default appears value defined in "InfoprintServer\_DEFAULT" property. The rest of process is exactly as conventional defined before.

### Sending spools \*SCS, \*AFPDS and \*IPDS using USRDFNDTA parameter

This method is exactly the same as describe in previous section " *Using USRDFNDTA*".

### Sending spools \*SCS, \*AFPDS and \*IPDS using SNDCOLSPLF command

If "InfoprintServer" property is enable, user can use EBIT/SNDCOLSPLF command to send spool by fax, eMail o Dossier using InfoPrint Server for conversion. See "Commands supported" in previous section for more information.

## 5761 TS1 - IBM Transform Services for i5/OS.

From OS400 versión 6.1, IBM provides for free *5761 TS1-IBM Transform Services for i5/OS*; this software allows to create PDFs in an easy way.

### How to create a PDF

Suppose you have an existing application that consists of a program (\* PGM) named MIPGM and a printer file (\* FILE) called MIPRTF, where the program uses the file MIPGM MIPRTF printer to generate a spool containing a report. Before to call MIPGM, you have to execute OVRPRTF command:

```
ARCHIVO OVRPRTF (MIPRTF) DEVTYPE (*AFPDS)
 TOSTMF(' /biton/tmp ')
 WSCST (*PDF)
```

And after you can call MIPGM program.

As shown in Fig.1, instead of generating a spool and place it in an output queue, it generates a PDF in /biton/tmp folder. File name can be specify with parameter TOSTMF. You can specify a file name, fo example /biton/tmp/mipdf.pdf or just a folder, in this case file name will be MIPRTFxxyyzz.pdf, where xxyyzz its an unique name generate by operating system.

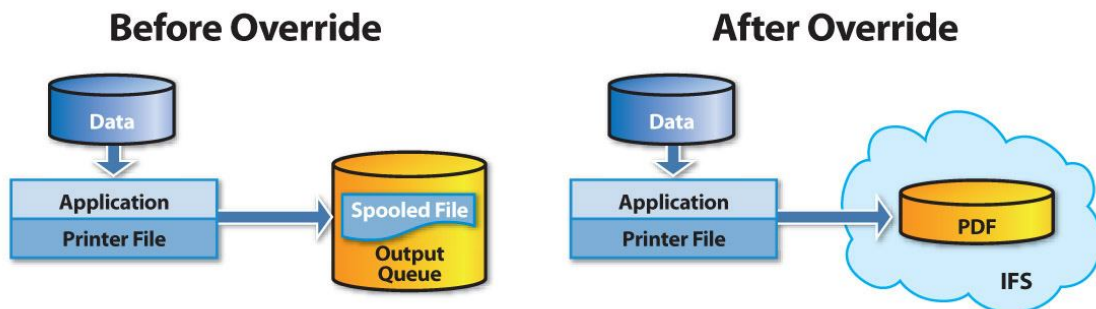


Fig.1

### How to send PDF generate with eBIT400

# Tools

## In this chapter

---

- How to delete ALL documents from **eBit400** platform.
- How to install and use overlay in IBM i (\*AFPDS).
- How to backup eBit400 platform.

## How to delete all documents from eBit400 platform

eBit400 administrator has option to delete all document from eBit400 platform with this command:

**CALL EBIT/RESETBD**

## How to install and use overlay in IBM i (\* AFPDS)

First of all, it will be necessary to install IBM AFP printer driver that its available in IBM website (see next section), in your windows PC.

### Configuring IBM AFP printer

Download IBM AFP printer driver from this link:

<http://www-1.ibm.com/support/dlsearch.wss?rs=95&apar=exclude&q=afp++printer+windows&dc=D430>.

After this, you should decompress the file downloaded. Uno de ellos es el "**cwbaftp.inf**", que es el que usa Windows para instalar un nuevo dispositivo. Using "Configuration", "Printers", "Add printer" select local printer, FILE as port option and click next. Then select "Use a disk" and find "**cwbaftp.inf**" file extracted before, then click "OK". Appears a list to choose a AFP printer: we recommend **IBM AFP 3170**.

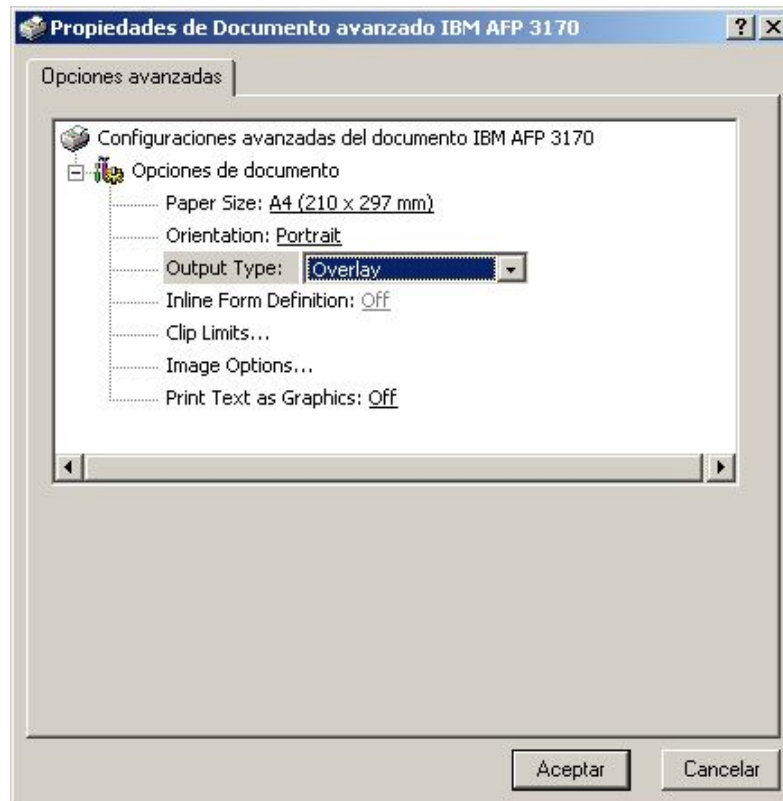
### Creating Overlay

Overlays can be created from any text editor: Microsoft Word, Excel, Paint...

After to have finish document design, you have to print it in the IBM AFP 3170 printer.

IMPORTANT: In "Advanced Options" or "Properties", A4 (210x297 mm) must be selected as paper size, and output type overlay.

You will see a screen similar this one:



## Creating Overlay in IBM i

In previous screen you have to click "Accept" button. You will be asked to select folder and file name (with extension .prn) to save output. If you have share folders in IBM i, its better to choose one of this; if not, any folder in your PC its ok.

After that, you have to follow next steps in AS/400:

1. SCreate a physical file,

```
CRTPF FILE(QGPL/BITON) RCDLEN(32766) LVLCHK(*NO)
```

2. Transfer .prn file from your PC to IBM i:

- If .prn file has been saved in a shared folder,

```
CPYFRMPCD FROMFLR('/QSECOFR/') TOFILE(QGPL/BITON)
FROMDOC(WINDOWS.PRN) TRNTBL(*NONE) TRNFMT(*NOTEXT)
```

- If you wish to use FTP,

Open a MSDOS command window (Start, Execute and type **CMD** + Enter)

```
Type: cd \folder_where_is_prn_file
```

```
Type: ftp as400_ip_address
```

```
Type: QSECOFR as user
```

```
Type: binary
```

```
Type: put prn_file QGPL/BITON
```

Type: **quit**

3. Finally, execute this command,

```
CRTOVL OVL(QGPL/FACTURA) FILE(QGPL/BITON) MBR(BITON)
DATATYPE(*AFPDS) TEXT('Test')
```

If command ends successfully, you will be notice with a message at the botton of screen. If not, review steps from beginning: normally, can be that you have not selected the value "preformatted " or "overlay" when printing the document to the printer Windows IBM AFP 3170.

## Printing a demo spool using Overlay

Once you have create overlay on the IBM iSeries, you can delete the file QGPL/BITON DLTF FILE(QGPL/BITON) command.

To print using overlay, you have just to change spool attributes using "OVRPRTF" command, with FRONTOVL parameter, and \*AFPDS as printer type.

Lets go to test with a print screen with overlay.

- 1- Let's specify that we want to print with QGPL/INVOICE overlay:

```
OVRPRTF FILE(QSYSPRT) DEVTYPE(*AFPDS) FRONTOVL(QGPL/INVOICE)
```

- 2- Press "PRINT SCREEN" key in your keyboard.
- 3- Now, you have to find spool (**WRKSPLF**), and change OUTQ to printer where you want to send spool. If result is OK, now you can send it by eMail or Fax using **eBIT400**.
- 4- ; Thats all !

## How to make a full backup of eBIT400 platform

If you want to have a full backup of eBit400 platform, you have to save EBIT library and /biton folder (and subfolders).

### How to save eBit400 database and ILE programs

1. From command line, execute:

```
SAVLIB LIB(EBIT) DEV(yyyy)
```

Where yyyy is device to use (Tapxx, OPTxx, \*SAVF, etc)

### How to save folder with eBit400 Java programs

1. From command line, execute:

To a tape device:



SAV DEV('/qsys.lib/tapxx.dev') OBJ('/biton/\*') DTACPR(\*HIGH)

To a optical device:

SAV DEV('/qsys.lib/optxx.dev') OBJ('/biton/\*') DTACPR(\*HIGH)

To a save file:

SAV DEV('/qsys.lib/savlib.lib/savf.file') OBJ('/biton/\*') DTACPR(\*HIGH)

## Commands provided

This chapter describes commands provided by *eBIT400*. Are described in alphabetical order. Each description contains the syntax and values that can be used in each.

Detailed explanation of format command descriptions and syntax can be found in the manual AS/400 Programming: Control Language Reference SC41-0030.

### In this chapter

---

- **CHGCMDDFT**, change default values
- **CRTEBOUTQ**, create virtual printer for formatting purposes
- **SNDCOLSPLF**, send a spool by fax, eMail or dossier with InfoPrint Server
- **SNDEBARCH**, send iSeries object to network
- **SNDEBFAX**, send a fax
- **SNDEBMAIL**, send an eMail
- **SNDEBSMS**, send a SMS
- **SNDEBSPLF**, send spool(s) by fax, eMail and dossier
- **WRKBIDOCs**, work with *eBIT400* documents
- **WRKBISPLF**, work with spools and send it manually.

**CHGCMDDFT, change default values**

All commands provided by eBIT400 can change any default setting. In order to modify it just run the command CHGCMDDFT.

**Examples:**

**CHGCMDDFT CMD(EBIT/SNDEBSPLF) NEWDFT('METHOD(TEXTO)')**

In this example, default METHOD parameter is change to "TEXTO" instead of "IMGTIF".

**CHGCMDDFT CMD(EBIT/SNDEBSMS) NEWDFT(USER(OPGMR)')**

In this example, default USER parameter in command SNDEBSMS is change to "OPGMR" instead of "\*\*CURRENT"

This change is applied forever or until changed again. The change is immediate.

**CRTEBOUTQ , create virtual printer for formatting purposes**

```

Job: I Pgm: I REXX: I Exec
>>--CRTEBOUTQ----->
>+-----+
>| |
>+--DEVD(---Device---)+
>+-----+
>| +-*DEVD-----+
>+--RMTprtq(---Remote Outq---)
>+-----+
>| +--ESKERDELIVERYWARE-----+
>+--HOST(---Host_Server---)+
>+-----+
>| |
>+--TEXT(-----Text_description--)+
>+-----+

```

**PURPOSE**

This command creates a virtual printer in **eBit400** to be used for formatting purposes, using Crystal Report tool.

**Device (DEVD)**

Printer name.

**PRT...**

By default PRT.... This value is not correct.

**Device**

Printer name to create. It should not exist in the system as type \* DEVD.

**Remote outq (RMTprtq)**

Remote queue defined in Esker server.

**\*DEVD**

By default its created with the same device name.

**Queue name**

Remote queue name

**Host/IP Server (HOST)**

Host or server IP address.

**ESKERDELIVERYWARE**

By default appears **ESKERDELIVERYWARE**. There are two ways to configure the server:

- 1 - Using a name that appears in CFGTCP, option 10.
- 2- Using IP address.

**Host name/IP**

Host name or server IP address.

**Text (TXT)**

Specifies the text description of the virtual printer that will create.

**Text**

Specifies the text description of the virtual printer that will create.

**Example**

```

CRTEBOUTQ DEVD(SPAIN)
RMTprtq(*DEVD) HOST('192.168.1.1')
TEXT('Printer for Spain')

```

This command creates a virtual printer with name SPAIN, with remote outq name SPAIN and IP 192.168.1.1

## SNDCOLSPLF , sending a spool by e-Mail o Dossier using InfoPrint Server

```

Job: B,I Pgm: B,I REXX: B,I Exec
>>--SNDCOLSPLF-----
>--+-----+
>+EXP(---*NONE-----)-+
>| +--Dossier-----+
>--+CMD(---+EMAIL---)-+
>| +-Dossier+
>--+USER(---*CURRENT---)-+
>| +-User perfil---+
>--+-----+
>+REF(--Subject-or-Reference--)+

```

## To send by eMail

```

>--+-----+
>+DE(---*FROM-----)-+
>|
>--+-----+-----+-----+-----+
>| (máx. 50) | | (máx. 50) | | (máx. 25) |
>+A(--to-recipient---)+ +CC(--cc- recipient -)+ +BCC(--bcc- recipient --)+
>| +-SQL sentence ----+ +- SQL sentence ----+ +- SQL sentence ----+
>--+-----+-----+-----+-----+
>+GDR(----GDR rule----)-+
>|
>--+-----+
>+FIRMA(--Digital Signature--)+
>--+-----+
>+LOGO(--Logo header--)+
>--+-----+
>+OVRLY(--Overlay--)+
>--+-----+
>+MSG(----Message Text-----)-+
>--+-----+
>+MAILTXT(--+-----+File--)+--+MBRTXT(--member--)+
>| +-library/+
>--+-----+
>+FILE(--spool-file--)+ <- 50 máx.
>|
>| +*-----+
>+JOB(---+-----+job-name-)+ +SPLNBR(---*ONLY-----)-+
>| +-+-----+user-name+ +-file-number+
>| +job-number+
>+(-+Attache_file--+)+
>--+-----+
>| | <--- 10 máx.
>+IFS(--system-object--)+

```

## To send by Dossier

```

>--+-----+
>+GDR(----GDR rule----)-+
>--+-----+
>+FIRMA(--Digital signature--)+
>--+-----+
>+LOGO(--Logo header--)+
>--+-----+
>+OVRLY(--Overlay--)+
>--+-----+

```



**Apply GDR rule (GDR)**

Specify GDR rule to apply.

This parameter can have these values:

**\*NONE**

Does not apply any GDR rule.

**GDR rule name**

GDR rule name to apply.

**Digital Signature (FIRMA)**

Specify Digital Signature to use to sign PDF files. User must have rights to use signature selected.

This parameter can have these values:

**\*NONE**

Does not apply any digital signature.

**Digital\_Signature\_Name**

Digital signature to use to sign PDF files.

**Header logo (LOGO)**

Specify header logo to apply in first spool page. With F4 function key, its possible to list all header logos available in *eBit400*.

**\*NONE**

Does not apply any header logo.

**Header\_Logo**

Specify a header logo.

**Overlay (OVRLY)**

Specify a overlay to use in each spool page. With F4 function key, its possible to list all overlays available in *eBit400*.

**\*NONE**

Does not apply any overlay.

**Overlay**

Specify a overlay.

**Text (MSG)**

Specify text body. CHAR(5000). String "**\n**" its replaced as carriage return.

**Fichero a enviar del iSeries (MAILTXT)**

Specify a file name to be attached in transmission. Only physical files and source members are allowed.

This parameter can have these values:

**File\_Name**

File name to be attached.

**Biblioteca**

Library name.

**\*LIBL**

Library name.

**Member**

Optionally, its possible to specify a member. For save file (\*SAVF) its not mandatory. \*FIRST its used by default.

**\*FIRST**

Member name.

**Spool file name (FILE)**

Specify spool file to be sent. Its mandatory. CHAR(10). A maximum of 50 entries its possible.

**Job name (JOB)**

Specify job name generated by spool file. CHAR(10), CHAR(10), CHAR(6).

\*

- By default appears \*. Job name its the same as the current.

**job-name**

Specify job name.

**user-name**

Specify user name associated with job.

**job-number**

Specify job number associated with job.

**Spool number (SPLNBR)**

Specify spool file number to be sent. BIN(4)

**\*LAST**

Last spool generated with the filename specified.

**\*ONLY**

The only existing spool with the filename specified.

**spool-file-number**

Specify a spool file number. Range 1 to 999999.

**Attach name**

Specify name used in spool attachment. Char 20.

**\*DFT**

By default file name, job, User, Job.Num and Spool number, delimited by an underscore (\_).

#### Attach name

Specify a valid name.

#### Object to send as attach (IFS)

Specify an object (STMF/IFS) to be sent. A maximum of 10 entries its possible. It must select the object with the following nomenclature:

#### STMF/IFS File:

File is sent in binary format with same extension as original. For example:

```
/TMP/BALANCE TRIMESTRAL.XLS
/BIT ON CONSULTORES, S.L./FAX/T00001.PCL
```

#### Document:

File is sent in binary format. For example:

```
/QDLS/QSECOFR/HOJA DE CALCULO.DOC
```

#### Source member:

File is sent in text format. For example:

```
/qsys.lib/qgpl.lib/qddsrc.file/pruebas.mbr
```

#### Save file:

File is sent in binary format. For example:

```
/qsys.lib/QGPL.LIB/SAVEFILE.FILE
```

---

### Sending by ARCHIVE.

#### Apply GDR rule (GDR)

Specify a GDR rule to be applied.

This parameter can have these values:

#### \*NONE

Does not apply any GDR rule.

#### GDR rule name

GDR rule name to apply.

#### Digital Signature (FIRMA)

Specify Digital Signature to use to sign PDF files. User must have rights to use signature selected.

This parameter can have these values:

#### \*NONE

Does not apply any digital signature.

#### Digital\_Signature\_Name

Digital signature to use to sign PDF files.

#### Header logo (LOGO)

Specify header logo to apply in first spool page. With F4 function key, its possible to list all header logos available in **eBit400**.

#### \*NONE

Does not apply any header logo.

#### Header\_Logo

Specify a header logo.

#### Overlay (OVRLY)

Specify a overlay to use in each spool page. With F4 function key, its possible to list all overlays available in **eBit400**.

#### \*NONE

Does not apply any overlay.

#### Overlay

Specify a overlay.

#### PATH (PATH)

Specify the path where to send the spool. If left blank, default path will be used. (See Administrador menu, option 8=Trabajar con valores por defecto)

#### Spool file name (FILE)

Specify spool file to be sent. Its mandatory. CHAR(10). A maximum of 50 entries its possible.

#### Job name (JOB)

Specify job name generated by spool file. CHAR(10), CHAR(10), CHAR(6).

\*

-

By default appears \*. Job name its the same as the current.

#### job-name

Specify job name.

#### user-name

Specify user name associated with job.



**job-number**

Specify job number associated with job.

**Spool number (SPLNBR)**

Specify spool file number to be sent.  
BIN(4)

**\*LAST**

Last spool generated with the filename specified.

**\*ONLY**

The only existing spool with the filename specified.

**spool-file-number**

Specify a spool file number. Range 1 to 999999.

**Attach name**

Specify name used in spool attachment.  
Char 20.

**\*DFT**

By default file name, job, User, Job.Num and Spool number, delimited by an underscore (\_).

**Attach name**

Specify a valid name.

**Object to send as attach (IFS)**

Specify an object (STMF/IFS) to be sent. A maximum of 10 entries its possible. It must select the object with the following nomenclature:

**STMF/IFS File:**

File is sent in binary format with same extension as original. For example:

```
/TMP/BALANCE TRIMESTRAL.XLS
/BIT ON CONSULTORES, S.L./FAX/T00001.PCL
```

**Document:**

File is sent in binary format. For example:

```
/QDLS/QSECOFR/HOJA DE CALCULO.DOC
```

**Source member:**

File is sent in text format. For example:

```
/qsys.lib/qgpl.lib/qddsrc.file/pruebas.mbr
```

**Save file:**

File is sent in binary format. For example:

```
/qsys.lib/QGPL.LIB/SAVEFILE.FILE
```

**OPTIONAL PARAMETERS****Deferred transmission (BROADCAST)**

Specify it transmission should be deferred.

**\*HOY**

It will send today.

**Date**

Specify date that you want to send the document. Format is ddmmyyyy (p.e. 15122003)

**\*NOW**

It will send now. only valid if \*HOY is specified in Date.

**Hour**

Specify hour that yu want to send the document. Format is hhmmss (24 horas format)

**Esamples**

```
SNDCOLSPLF CMD(*EMAIL)
REF('Reclamación pedido 123')
DE(jcarreras@biton.es)
MSG('Hola\nReclamamos su pedido')
FILE((QSYSPRT * *LAST RECLAMACION))
```

This command sends last QSYSPRT spool, by eMail to jcarreras@biton.es with subject "Envío de pedido 12345" last QSYSPRT spool, with RECLAMACION1.PDF file attachment



*Select email\_address From table  
where City like 'Barcelona%'*

### Carbon Copy recipient (CC)

Specify carbon copy recipient address. A maximum of 50 entries its possible.  
Char(256).

#### SQL Sentence

Its possible to use SQL sentence to retrieve recipient eMail address.

For example:

*Select email\_address From table  
where City like 'Madrid%'*

### Blind Carbon Copy (BCC)

Specify carbon copy recipient address. A maximum of 25 entries its possible.  
Char(256)

#### Dirección BCC

Se puede especificar una Dirección de correo electrónico válida.

#### SQL Sentence

Its possible to use SQL sentence to retrieve recipient eMail address.

For example:

*Select email\_address From table  
where CP like 'Zona\_Franca%'*

### Text (MSG)

Specify text body. CHAR(5000). String  
"\\n" its replaced as carriage return.

### Attach text file (MAILTXT)

Specify a file to be attached in transmission. Either physical files and source members are allowed. This parameter can have these values:

#### File\_Name

File name to be attached.

#### Biblioteca

Library name.

#### \*LIBL

Library name.

#### Member

Optionally, it possible to specify a member. For save file (\*SAVF) its not mandatory. \*FIRST its used by default.

#### \*FIRST

Member name

### Attatch iSeries file (MAILTXT)

Specify a file name to be attached in transmission. Only physical files and source members are allowed.

This parameter can have these values:

#### File\_Name

File name to be attached.

#### Biblioteca

Library name.

#### \*LIBL

Library name.

#### Member

Optionally, it possible to specify a member. For save file (\*SAVF) its not mandatory. \*FIRST its used by default.

#### \*FIRST

Member name.

### Attatch an object (OBJ)

Specify a STMF/IFS object to be attached in transmission. A maximum of 50 entries its possible. Are not allowed object beginning with /QSYS.LIB/...

Syntax:

#### STMF/IFS file:

Its sent in bynary format with same extension as original. For example:

/TMP/BALANCE TRIMESTRAL.XLS  
/BIT ON CONSULTORES, S.L./FAX/T00001.PCL

#### Document:

Its sent in bynary format. For example:

/QDLS/QSECOFR/HOJA DE CALCULO.DOC

#### Source member:

Its sent in text format. For example:

/qsys.lib/qgpl.lib/qddsrcrc.file/pruebas.mbr

**OPTIONAL PARAMETERS****Deferred transmission (BROADCAST)**

Specify it transmission should be deferred.

**\*HOY**

It will send today.

**Date**

Specify date that you want to send the document. Format is ddmmyyyy (p.e. 15122003)

**\*NOW**

It will send now. only valid if \*HOY is specified in Date.

**Hour**

Specify hour that you want to send the document. Format is hhmmss (24 horas format)

**Examples**

```
SNDEBFAX REF('Demo fax')
DE(SOPORTE@BITON.ES)
FAX(0034933008760) MSG
('Adjuntamos archivo de salvar
ebit/savf.\nSaludos\n') FILE((EBIT/SAVF
FAXMBR))
```

In this example, a fax is sent to **0034933008760**, with subject 'Demo fax', with From [soporte@biton.es](mailto:soporte@biton.es), with message body 'Adjuntamos ..... ' and attachment FAXMBR member from EBIT/SAVF file.

```
SNDEBFAX REF('Demo fax2')
DE(SOPORTE@BITON.ES) FAX('Select fax
From ebit/BTAGENDA Where tipo in
('FAX', 'MAILING')') MSG
('Adjuntamos PDF con folleto de la
plataforma eBIT400.\nSaludos\n')
OBJ('/tmp/ebit400.pdf')
```

In this example, a fax is sent to all recipients return by SQL sentence, with subject 'Demo fax2', with From [soporte@biton.es](mailto:soporte@biton.es), with message body 'Adjuntamos ..... ' and ebit400.pdf attachment.

## SNDEBMAIL , send iServer objects by eMail

```

-----+-----+-----+-----+-----+-----+-----+-----+-----+-----+
>>--SNDEBMAIL-----+-----+-----+-----+-----+-----+-----+-----+-----+-----+
>-----+-----+-----+-----+-----+-----+-----+-----+-----+-----+
>+--EXP(--+---*NONE-----+---)--+
>| +---Expediente-----+
>-----+-----+-----+-----+-----+-----+-----+-----+-----+-----+
>+--REF(--Asunto-o-Referencia--)+
>-----+-----+-----+-----+-----+-----+-----+-----+-----+-----+
>+--DE(--+---*FROMUSER-----+---)--+
>| +---Dirección-De-----+
>-----+-----+-----+-----+-----+-----+-----+-----+-----+-----+
>|-----+-----+-----+-----+-----+-----+-----+-----+-----+-----+
>| | <--- 50 máx.
>+--A(--+---dirección-a-to-----+---)--+
>| +---sentencia-SQL-----+
>-----+-----+-----+-----+-----+-----+-----+-----+-----+-----+
>|-----+-----+-----+-----+-----+-----+-----+-----+-----+-----+
>| | <--- 50 máx.
>+--CC(--+---dirección-a-cc-----+---)--+
>| +---sentencia-SQL-----+
>-----+-----+-----+-----+-----+-----+-----+-----+-----+-----+
>|-----+-----+-----+-----+-----+-----+-----+-----+-----+-----+
>| | <--- 25 máx.
>+--BCC(+---dirección-a-bcc-----+---)--+
>| +---sentencia-SQL-----+
>-----+-----+-----+-----+-----+-----+-----+-----+-----+-----+
>+--MSG(-----Texto-del-envío-----)--+
>-----+-----+-----+-----+-----+-----+-----+-----+-----+-----+
>|-----+-----+-----+-----+-----+-----+-----+-----+-----+-----+
>| +---*LIBL/-----+
>+--MAILTXT(--+-----+--- Fichero--)+---+--MBRTXT(--miembro--)+
>| +---biblioteca/+
>-----+-----+-----+-----+-----+-----+-----+-----+-----+-----+
>|-----+-----+-----+-----+-----+-----+-----+-----+-----+-----+
>| | <--- 50 máx.
>+--FILE(--+-----+---Fichero--)+---+--MBR(--miembro--)+
>| +---biblioteca/+
>-----+-----+-----+-----+-----+-----+-----+-----+-----+-----+
>|-----+-----+-----+-----+-----+-----+-----+-----+-----+-----+
>| | <--- 50 máx.
>+--OBJ(--objeto-de-sistema--)+
>-----+-----+-----+-----+-----+-----+-----+-----+-----+-----+
>+--FIRMA(--Firma_Electrónica--)+
-----+-----+-----+-----+-----+-----+-----+-----+-----+-----+

```

**PURPOSE**

SNDEBMAIL allows to send any object (physical file, save file, font member, document, STMF/IFS file , etc ) by Email.

**Dossier (EXP)**

Specify dossier name applied after to send document.

**Subject or Reference (REF)**

Specify subject or reference of this document. CHAR(128).

**User Perfil (USER)**

Specify user owner of this document. Possible values are:

**\*CURRENT**

Owner will be user who execute this command.

**User perfil**

Owner will be user selected (must exist in **eBit400** platform).

**From address (DE)**

Specify from address field. This parameter can have these values:

**\*FROM**

You can choose a user from eBit400 platform.

**Dirección DE**

You can specify a valid From address.

**Recipient address (A)**

Specify To address. A maximum of 50 entries its possible. At least one address its mandatory. Char(256).

**SQL Sentence**

Its possible to use SQL sentence to retrieve recipient eMail address.

For example:

*Select email\_address From table  
where City like 'Barcelona%'*

### Carbon Copy recipient (CC)

Specify carbon copy recipient address. A maximum of 50 entries its possible.  
Char(256).

#### SQL Sentence

Its possible to use SQL sentence to retrieve recipient eMail address.

For example:

*Select email\_address From table  
where City like 'Madrid%'*

### Blind Carbon Copy (BCC)

Specify carbon copy recipient address. A maximum of 25 entries its possible.  
Char(256)

#### Dirección BCC

Se puede especificar una Dirección de correo electrónico válida.

#### SQL Sentence

Its possible to use SQL sentence to retrieve recipient eMail address.

For example:

*Select email\_address From table  
where CP like 'Zona\_Franca%'*

### Text (MSG)

Specify text body. CHAR(5000). String  
" \n " its replaced as carriage return.

### Attach text file (MAILTXT)

Specify a file to be attached in transmission. Either physical files and source members are allowed. This parameter can have these values:

#### File\_Name

File name to be attached.

#### Biblioteca

Library name.

#### \*LIBL

Library name.

#### Member

Optionally, it possible to specify a member. For save file (\*SAVF) its not mandatory. \*FIRST its used by default.

#### \*FIRST

Member name

### Attach iSeries file (MAILTXT)

Specify a file name to be attached in transmission. Only physical files and source members are allowed.

This parameter can have these values:

#### File\_Name

File name to be attached.

#### Biblioteca

Library name.

#### \*LIBL

Library name.

#### Member

Optionally, it possible to specify a member. For save file (\*SAVF) its not mandatory. \*FIRST its used by default.

#### \*FIRST

Member name.

### Attach an object (OBJ)

Specify a STMF/IFS object to be attached in transmission. A maximum of 50 entries its possible. Are not allowed object beginning with /QSYS.LIB/....

Syntax:

#### STMF/IFS file:

Its sent in bynary format with same extension as original. For example:

/TMP/BALANCE TRIMESTRAL.XLS  
/BIT ON CONSULTORES, S.L./FAX/T00001.PCL

#### Document:

Its sent in bynary format. For example:

/QDLS/QSECOFR/HOJA DE CALCULO.DOC

#### Source member:

Its sent in text format. For example:

/qsys.lib/qgpl.lib/qddsrc.file/pruebas.m  
br

**Digital Signature (FIRMA)**

Specify Digital Signature to use to sign PDF files. User must have rights to use signature selected.

This parameter can have these values:

**\*NONE**

Does not apply any digital signature.

**Digital\_Signature\_Name**

Digital signature to use to sign PDF files.

**Examples**

```
SNDEBMAIL REF('Demo email')
DE(SOPORTE@BITON.ES)
A(JCARRERAS@BITON.ES) MSG
('Adjuntamos archivo de salvar
ebit/savf.\nSaludos\n') FILE((EBIT/SAVF))
```

In this example, eMail is sent to [jcarreras@biton.es](mailto:jcarreras@biton.es), with Subject 'Demo email', with From [soporte@biton.es](mailto:soporte@biton.es), with message body 'Adjuntamos ..... ' and ebit/SAVF (\*SAVF) attachment.

```
SNDEBMAIL REF('Demo email2')
DE(SOPORTE@BITON.ES) A('Select email
From ebit/BTAGENDA Where tipo in
('EMAIL', 'MAILING')') MSG
```

```
('Adjuntamos PDF con folleto de la
plataforma eBIT400.\nSaludos\n')
OBJ('/tmp/ebit400.pdf')
```

In this example, an eMail is sent to all recipients return by SQL sentence, with subject 'Demo email2', with From [soporte@biton.es](mailto:soporte@biton.es), with message body 'Adjuntamos ..... ' and /tmp/ebit400.pdf attachment.

**SNDEBSMS , send a SMS**

```

Job: B,I Pgm: B,I REXX: B,I Exec
>>--SNDEBSMS----->
>----->
>+EXP(---*NONE-----)+
|
|+--Dossier-----+
>--+USER(---*CURRENT---)+----->
|
|+--User_Perfil---+
>----->
>+REF(--Subject-or-Reference--)+
>----->
>+SMS(---telephone_number---)+
|
|+--SQL_sentence-----+
>----->
>+MSG(---SMS_Message_text-----)+
>----->
>+SERVER(---*ALL-----+
|
|+--*DFT-----+
|
|+--server-----+

```

**OPTIONAL PARAMETERS**

```

>+PARAMS(---Parameter---) <- max. 25 entradas
|
|+--Value-----+
>-----<
>+BROADCAST(---*HOY-----+---*Ahora-----+
|
|+--Fecha-----+ +--Hora-----+
>-----<

```

**PURPOSE**

SNDEBSMS allows to send SMS text messages.

**Dossier (EXP)**

Specify dossier name applied after to send document.

**Subject or Reference (REF)**

Specify subject or reference of this document. CHAR(128).

**User Perfil (USER)**

Specify user owner of this document. Possible values are:

**\*CURRENT**

Owner will be user who execute this command.

**User perfil**

Owner will be user selected (must exist in *eBit400* platform).

**Telephone number (SMS)**

Specify telephone number to which you want to send the message. Char(256).

**Number**

A valid SMS telephone number.

**SQL sentence**

Its possible to use SQL sentence to retrieve SMS telephone numbers.

For example:

*Select sms\_filed From tabla where City like 'Mad%'*

**Text (MSG)**

Specify SMS message text. CHAR(256).

**Server (SERVER)**

Specify server name that you want use to send SMS message. Possible values are:



**\*DFT**

Default server will be used.

**Server name**

Server specify will used to send SMS.

**\*ALL**

Transmission will be done through all active servers. Duplicate messages, can be generated.

**OPTIONAL PARAMETERS****Metadata information (PARAMS)**

If Dossies is specify, then its possible to define a maximum of 25 metadata parameters.

**PARAMETER**

Parameter name.

**VALUE**

Parameter value.

**Deferred transmission (BROADCAST)**

Specify it transmission should be deferred.

**\*HOY**

It will send today.

**Date**

Specify date that you want to send the document. Format is ddmmyyyy (p.e. 15122003)

**\*NOW**

It will send now. only valid if \*HOY is specified in Date.

**Hour**

Specify hour that you want to send the document. Format is hhmmss (24 horas format)

**Examples**

```
SNDEBSMS USER(*CURRENT) REF('Demo
SMS') SMS(620000001) MSG
('Llama urgentemente al Sr. Monteagudo')
```

In this example, a SMS message is sent to 620000001, with Subject 'Demo SMS', with message text 'Adjuntamos .....'.

```
SNDEBSMS USER(QPGMR) REF('Demo SMS
2') SMS('Select dst_sms From
ebit/BTAGENDA Where tipo in ('SMS',
'MAILING')') MSG
('Información gratuita visite nuestra web
www.biton.es')
```

In this example, a SMS message is sent to all recipients return by SQL sentence, with Subject 'Demo SMS 2', with message text 'Información ...' and QPGMR as owner of this document.

## SNDEBSPLF , send a spool by Fax, e-Mail or Archive

```

Job: B,I Pgm: B,I REXX: B,I Exec
>>--SNDEBSPLF-----MODO(---*PROD---)-----
| +-*TEST--+
>-----+-----+
>+-EXP(---*NONE-----)+
| +-Dossier-----+
>---+---CMD(---+EMAIL---)-----+
| +-FAX-----+
| +-ARCHIVE+
>---+---USER(---*CURRENT-----)-----+
| +-User_Perfil---+
>---+---REF(---Subject_Reference---)+
>---+---METHOD(---+IMGTIF---)-----+
| +-IMGPCL---+
| +-TEXT---+
| +-TXTA4---+
| +-TXPCLA---+
| +-TXPCLS---+

```

## To send by eMail

```

>---+---DE(---*FROMUSER-----)---+
| +-From address-----+
>-----+-----+-----+-----+
| (máx. 50) | | (máx. 50) | | (máx. 25) |
+-A(---To_Address---)---+ +-CC(---cc_address---)---+ +-BCC(---bcc_address---)---+
| +-SQL Sentence ----+ +- SQL Sentence ----+ +- SQL Sentence ----+
>---+---GDR(---GDR rule-----)---+
>---+---FIRMA(---Digital signature---)---+
>---+---LOGOHEADER(---Header logo---)---+
>---+---LOGOPIE(---Footer logo---)---+
>---+---OVRLY(---Overlay---)---+
>---+---MSG(---Message_Text-----)---+
>---+---MAILTXT(---+File---)---+---+MBRTXT(---member---)---+
| +-library/+
>---+---+---FILE(---spool_file---)---+ <--- 50 máx.
|
| +-*-----+ +-*LAST-----+
+-JOB(---+job-name-)+ +SPLNBR(---*ONLY---)---+
| +-+user-name+ +-file-number+
| +-job-number+
+-(-+Attache_name---)---+ +-(-+Attach_format---)---+
| +-*DFT---+
| +-*PDF---+
| +-*HTML---+
| +-*TXT---+
| +-*RTF---+
| +-*XLS---+
| +-*TIF---+
>---+---+---IFS(---system_object---)---+ | <--- 10 máx.

```

## To send by FAX

```

>-----+-----+
>+GDR(-----GDR rule-----)--+
>-----+-----+
>+LOGOHEADER(--Header logo--)+
>-----+-----+
>+LOGOPIE(--Footer logo--)+
>-----+-----+
>+OVRLY(--Overlay--)+
>-----+-----+
>+FAX(--Fax number--)+
>-----+-----+
>+COVER(--*NONE-----)+ +FROM(--From_information--)+ +TO(--To_information--)+
+cover-page+
>-----+-----+
>+FILE(--spool_file--)+ <- 50 máx.
|
| +*-----+ +*LAST-----+
+JOB(+-----+job-name-)+ +SPLNBR(--*ONLY-----)+
| +-----+user-name+ +file-number+
| +job-number+
+-(+attach--+)+ +-(+attach_format--+)+
| +*DFT-----)+
| +*PDF--+
| +*TIF--+

```

## To send by ARCHIVE

```

>-----+-----+
>+GDR(-----GDR rule-----)--+
>-----+-----+
>+FIRMA(--Digital_Signature--)+
>-----+-----+
>+LOGOHEADER(--Header logo --)+
>-----+-----+
>+LOGOPIE(--Footer logo --)+
>-----+-----+
>+OVRLY(--Overlay--)+
>-----+-----+
>+PATH(--Path-to_save_spool--)+
>-----+-----+
>+FILE(--spool_file--)+ <- 50 máx.
|
| +*-----+ +*LAST-----+
+JOB(+-----+job-name-)+ +SPLNBR(--*ONLY-----)+
| +-----+user-name+ +file-number+
| +job-number+
+-(+attach--+)+ +-(+attach_format--+)+
| +*DFT-----)+
| +*PDF--+
| +*HTML--+
| +*TXT--+
| +*RTF--+
| +*XLS--+
| +*TIF--+
>-----+-----+
| | <--- 10 máx.
+IFS(--system_object--)+

```



**@ Sending by eMail.****Dirección de quién efectúa el envío (DE)**

Especifica la Dirección de quién efectúa el Envío. Este parámetro puede tener estos valores;

**\*FROMUSER**

Se recupera la Dirección FROM de correo especificada en la lista de Usuarios de eBIT400. Es obligatorio que el Usuario esté definido en la lista de Usuarios (*Ver Trabajar con Usuarios*)

**Dirección DE**

Se puede especificar una Dirección de correo electrónico válida.

**Dirección a enviar (A)**

Specify To address. A maximum of 50 entries its possible. At least one address its mandatory. Char(256).

**Dirección A**

Recipient eMail address.

**Sentencia SQL**

Its possible to use SQL sentence to retrieve recipient eMail address.

For example:

*Select email\_address From table where City like 'Barcelona%'*

**Carbon Copy recipient (CC)**

Specify carbon copy recipient address. A maximum of 50 entries its possible. Char(256).

**SQL Sentence**

Its possible to use SQL sentence to retrieve recipient eMail address.

For example:

*Select email\_address From table where City like 'Madrid%'*

**Blind Carbon Copy (BCC)**

Specify carbon copy recipient address. A maximum of 25 entries its possible. Char(256)

**Dirección BCC**

Se puede especificar una Dirección de correo electrónico válida.

**SQL Sentence**

Its possible to use SQL sentence to retrieve recipient eMail address.

For example:

*Select email\_address From table where CP like 'Zona\_Franca%'*

**Apply GDR rule (GDR)**

Specify GDR rule to apply.

This parameter can have these values:

**\*NONE**

Does not apply any GDR rule.

**GDR rule name**

GDR rule name to apply.

**Digital Signature (FIRMA)**

Specify Digital Signature to use to sign PDF files. User must have rights to use signature selected.

This parameter can have these values:

**\*NONE**

Does not apply any digital signature.

**Digital\_Signature\_Name**

Digital signature to use to sign PDF files.

**Header logo (LOGO)**

Specify header logo to apply in first spool page. With F4 funtion key, its possible to list all header logos available in **eBit400**.

**\*NONE**

Does not apply any header logo.

**Header\_Logo**

Specify a header logo.

**Overlay (OVRLY)**

Specify a overlay to use in each spool page. With F4 funtion key, its possible to list all overlays available in **eBit400**.

**\*NONE**

Does not apply any overlay.

**Overlay**

Specify a overlay.

**Footer logo (LOGOPIE)**

Specify header logo to apply in first spool page. With F4 funtion key, its possible to list all header logos available in **eBit400**.

**\*NONE**

Does not apply any header logo.

**Footer\_Logo**

Specify a header logo.

**Texto (MSG)**

Specify text body. CHAR(5000). String "\n" its replaced as carriage return.

**Attach text file (MAILTXT)**

Specify a file to be attached in transmission. Either physical files and source members are allowed. This parameter can have these values:

**File\_Name**

File name to be attached.

**Biblioteca**

Library name.

**\*LIBL**

**Library name.**

**Member**

Optionally, it possible to specify a member. For save file (\*SAVF) its not mandatory. \*FIRST its used by default.

**\*FIRST**

**Member name.**

**Spool file name (FILE)**

Specify spool file to be sent. Its mandatory. CHAR(10). A maximum of 50 entries its possible.

**Job name (JOB)**

Specify job name generated by spool file. CHAR(10), CHAR(10), CHAR(6).

\*

-

By default appears \*. Job name its the same as the current.

**job-name**

Specify job name.

**user-name**

Specify user name associated with job.

**job-number**

Specify job number associated with job.

**Spool number (SPLNBR)**

Specify spool file number to be sent. BIN(4)

**\*LAST**

Last spool generated with the filename specified.

**\*ONLY**

The only existing spool with the filename specified.

**spool-file-number**

Specify a spool file number. Range 1 to 999999.

**Attach name**

Specify name used in spool attachment. Char 20.

**\*DFT**

By default file name, job, User, Job.Num and Spool number, delimited by an underscore (\_).

**Attach name**

Specify a valid name.

**Attach format**

Specify attach format. This parameter can have these values:

**\*DFT**

Use default value defined in **eBIT400** configuration.

**\*PDF**

\*SCS o \*AFPDS o \*USERASCII will be converted to PDF (*Adobe Portrait Document Format*).

**\*HTML**

\*SCS will be converted to \*HTML. \*AFPDS o \*USERASCII are not allowed for this conversion.

**\*TXT**

\*SCS will be converted to \*TXT. \*AFPDS o \*USERASCII are not allowed for this conversion.

**\*RTF**

\*SCS will be converted to \*RTF. \*AFPDS o \*USERASCII are not allowed for this conversion.

**\*XLS**

\*SCS will be converted to \*XLS. \*AFPDS o \*USERASCII are not allowed for this conversion.

**\*TIF**

\*SCS o \*AFPDS o \*USERASCII will be converted to TIF (*Tagged Image File Format*).

**Attach an object (OBJ)**

Specify a STMF/IFS object to be attached in transmission. A maximum of 50 entries its possible. Are not allowed object beginning with /QSYS.LIB/....

Syntax:

**STMF/IFS file:**

Its sent in bynary format with same extension as original. For example:

```
/TMP/BALANCE TRIMESTRAL.XLS
/BIT ON CONSULTORES, S.L./FAX/T00001.PCL
```

**Document:**

Its sent in bynary format. For example:

```
/QDLS/QSECOFR/HOJA DE CALCULO.DOC
```

**Source member:**

Its sent in text format. For example:

```
/qsys.lib/qgpl.lib/qddsrc.file/pruebas.mbr
```

**Save file:**

Is sent in binay format. For example:

```
/qsys.lib/QGPL.LIB/SAVEFILE.FILE
```

---

**Sending by FAX.****Apply GDR rule (GDR)**

Specify GDR rule to apply.

This parameter can have these values:

**\*NONE**

Does not apply any GDR rule.

**GDR rule name**

GDR rule name to apply.

**Header logo (LOGOHEADER)**

Specify header logo to apply in first spool page. With F4 funtion key, its possible to list all header logos available in **eBit400**.

**\*NONE**

Does not apply any header logo.

**Header\_Logo**

Specify a header logo.

**Footer logo (LOGOPIE)**

Specify header logo to apply in first spool page. With F4 funtion key, its possible to list all header logos available in **eBit400**.

**\*NONE**

Does not apply any header logo.

**Footer\_Logo**

Specify a header logo.

**Overlay (OVRLY)**

Specify a overlay to use in each spool page. With F4 funtion key, its possible to list all overlays available in **eBit400**.

**\*NONE**

Does not apply any overlay.

**Overlay**

Specify a overlay.

**Fax number(FAX)**

Specify fax number to send the spool.  
Char(256)

**Fax number**

Specify a fax number.

**SQL Sentence**

Its possible to use SQL sentence to retrieve fax numbers. For example:

```
Select campofaxl From tabla where
población like 'Barcelona%'
```

**Cover Page (COVER)**

Specify Cover Page to be used. With F4 function key, appears a list of cover pages availables in **eBit400**.

**\*NONE**

\*NONE appears by default. in this case, no Cover Page is used.

**Cover-page**

Specify a cover page name.

**From information (FROM)**

Specify from text information to be used in Cover Page.

**Spool file name (FILE)**

Specify spool file to be sent. Its mandatory. CHAR(10). A maximum of 50 entries its possible.

**Job name (JOB)**

Specify job name generated by spool file. CHAR(10), CHAR(10), CHAR(6).

\*

-

By default appears \*. Job name its the same as the current.

**job-name**

Specify job name.

**user-name**

Specify user name associated with job.

**job-number**

Specify job number associated with job.

**Spool number (SPLNBR)**

Specify spool file number to be sent. BIN(4)

**\*LAST**

Last spool generated with the filename specified.

**\*ONLY**

The only existing spool with the filename specified.

**spool-file-number**

Specify a spool file number. Range 1 to 999999.

**Attach name**

Specify name used in spool attachment. Char 20.

**\*DFT**

By default file name, job, User, Job.Num and Spool number, delimited by an underscore (\_).

**Attach name**

Specify a valid name.

**Attach format**

Specify attach format. This parameter can have these values:

**\*DFT**

Use default value defined in **eBIT400** configuration.

**\*PDF**

\*SCS o \*AFPDS o \*USERASCII will be converted to PDF (*Adobe Portrait Document Format*).

**\*TIF**

\*SCS o \*AFPDS o \*USERASCII will be converted to TIF (*Tagged Image File Format*).

---

**Sending by ARCHIVE****Apply GDR rule (GDR)**

Specify GDR rule to apply.

This parameter can have these values:

**\*NONE**

Does not apply any GDR rule.

**GDR rule name**

GDR rule name to apply.

**Digital Signature (FIRMA)**

Specify Digital Signature to use to sign PDF files. User must have rights to use signature selected.

This parameter can have these values:

**\*NONE**

Does not apply any digital signature.

**Digital\_Signature\_Name**

Digital signature to use to sign PDF files.

**Header logo (LOGOHEADER)**

Specify header logo to apply in first spool page. With F4 fuction key, its possible to list all header logos available in **eBit400**.

**\*NONE**

Does not apply any header logo.

**Header\_Logo**

Specify a header logo.

**Footer logo (LOGOPIE)**



Specify header logo to apply in first spool page. With F4 function key, its possible to list all header logos available in **eBit400**.

**\*NONE**

Does not apply any header logo.

**Footer\_Logo**

Specify a header logo.

**Overlay (OVRLY)**

Specify a overlay to use in each spool page. With F4 function key, its possible to list all overlays available in **eBit400**.

**\*NONE**

Does not apply any overlay.

**Overlay**

Specify a overlay.

**PATH (PATH)**

Specify path where do you want to save spool. If left blank will be sent to default path defined in eBit400 configuration. (See Administrator Menü, option 8=Working with default values)

**Spool file name (FILE)**

Specify spool file to be sent. Its mandatory. CHAR(10). A maximum of 50 entries its possible.

**Job name (JOB)**

Specify job name generated by spool file. CHAR(10), CHAR(10), CHAR(6).

\*

By default appears \*. Job name its the same as the current.

**job-name**

Specify job name.

**user-name**

Specify user name associated with job.

**job-number**

Specify job number associated with job.

**Spool number (SPLNBR)**

Specify spool file number to be sent. BIN(4)

**\*LAST**

Last spool generated with the filename specified.

**\*ONLY**

The only existing spool with the filename specified.

**spool-file-number**

Specify a spool file number. Range 1 to 999999.

**Attach name**

Specify name used in spool attachment. Char 20.

**\*DFT**

By default file name, job, User, Job.Num and Spool number, delimited by an underscore (\_).

**Attach name**

Specify a valid name.

**Attach format**

Specify attach format. This parameter can have these values:

**\*DFT**

Use default value defined in **eBIT400** configuration.

**\*PDF**

\*SCS o \*AFPDS o \*USERASCII will be converted to PDF (*Adobe Portrait Document Format*).

**\*\*HTML**

\*SCS will be converted to \*HTML. \*AFPDS o \*USERASCII are not allowed for this conversion.

**\*TXT**

\*SCS will be converted to \*TXT. \*AFPDS o \*USERASCII are not allowed for this conversion.

**\*RTF**

\*SCS will be converted to \*RTF. \*AFPDS o \*USERASCII are not allowed for this conversion.

**\*XLS**

\*SCS will be converted to \*XLS. \*AFPDS o \*USERASCII are not allowed for this conversion.

**\*TIF**

\*SCS o \*AFPDS o \*USERASCII will be converted to TIF (*Tagged Image File Format*).

**Attacht an object (OBJ)**

Specify a STMF/IFS object to be attached in transmission. A maximum of 50 entries

its possible. Are not allowed object beginning with /QSYS.LIB/....

Syntax:

#### STMF/IFS file:

Its sent in bynary format with same extension as original. For example:

```
/TMP/BALANCE TRIMESTRAL.XLS
/BIT ON CONSULTORES, S.L./FAX/T00001.PCL
```

#### Document:

Its sent in bynary format. For example:

```
/QDLS/QSECOFR/HOJA DE CALCULO.DOC
```

#### Source member:

Its sent in text format. For example:

```
/qsys.lib/qgpl.lib/qddsrc.file/pruebas.mbr
```

#### Save file:

Is sent in binay format. For example:

```
/qsys.lib/QGPL.LIB/SAVEFILE.FILE
```

### OPTIONAL PARAMETERS

#### Deferred transmission (BROADCAST)

Specify it transmission should be deferred.

#### \*HOY

It will send today.

#### Date

Specify date that you want to send the document. Format is ddmmyyyy (p.e. 15122003)

#### \*NOW

It will send now. only valid if \*HOY is specified in Date.

#### Hour

Specify hour that yu want to send the document. Format is hhmmss (24 horas format)

### Examples

```
SNDEBSPLF CMD(*EMAIL)
REF('Reclamación pedido 123')
A(jsaenz@biton.es) MSG('Hello\nFind
attached') FILE((QSYSPRT * *LAST
RECLAMACION
*RTF))
```

In this example, a eMail message is sent to jsaenz@biton.es, las spool QSYSPRT, with name RECLAMACION.RTF



**Element 3 (DESDE)**

Specify criteria for selecting documents, by date of creation.

**\*FIRST**

All documents are selected.

**Fecha**

Documents with date creation equal or greater specify are selected. Valid format is:

DdmmYYYY,  
Dd = Day (01 a 31)  
Mm = Month (01 a 12)  
Yyyy = Year (2009, 2010, ...)

**Element 4 (HASTA)**

Specify criteria for selecting documents, by date of creation.

**\*LAST**

All documents are selected.

**Fecha**

Documents with date creation equal or lower specify are selected. Valid format is:

DdmmYYYY,  
Dd = Day (01 a 31)  
Mm = Month (01 a 12)  
Yyyy = Year (2009, 2010, ...)

**EXAMPLES:**

```
WRKBIDOCs USER(*CURRENT)
TIPO(*ALL) DESDE(*FIRST)
HASTA(*LAST)
```

This command shows all documents sent and received.

```
WRKBIDOCs USER(MOMO) TIPO(*EMAIL)
```

This command shows all eMail documents from user Momo.

```
WRKBIDOCs USER(MOMO) TIPO(*FAX)
DESDE(01012010) HASTA(*LAST)
```

This command shows all Fax documents from user Momo with creation date is equal or greater than 01 January 2010 until now.

**WRKBISPLF ,working with Spool files.**

```

>>--WRKBISPLF -----Job: I Pgm: I REXX: I Exec |
>+-----+-----+-----+-----+-----+-----+-----+-----+-----+
| | | | | | | | | | | |
+-SELECT(-+*CURRENT--+ +-*ALL-----+ +-*ALL-----+
+-User--+ +- Outq- + +-Form_Type +-)

```

**PURPOSE**

WRKBISPLF command is similar with OS/400 Work with Spooled Files (WRKSPLF) but with more options: Send by eMail, Fax y/o Archive.

**Files to sent (SELECT)**

Specify selection criteria displayed spool files.

Possible values are:

**Element 1 Usuario:**

**\*CURRENT**

Only documents from current user are selected.

**\*ALL**

All documents are selected.

**Usuario**

Only spools from user specify are displayed.

**Element 2 Outq**

**\*ALL**

All documents are selected.

**Cola-de-Salida**

Specify outq; only file in that outq are selected.

**Element 3 Form type**

**\*ALL**

All documents are selected.

**\*STD**

Only spool files with form type specify are selected.

**Form-type**

Specify form type to be selected.

**EXAMPLES:**

WRKBISPLF SELECT(\*ALL \*ALL \*ALL)

This command allows to work with all spools.

**WRKBISPLF SELECT(JCARRERAS \*ALL \*ALL)**

This command allows to work with all spools from user jcarreras.

**WRKBISPLF SELECT(JCARRERAS \*ALL INOVICES)**

This command allows to work with all spools from user jcarreras with form type INOVICES.

# Troubleshooting

This chapter details the most common steps to detect and attempt to resolve problems that may appear in *eBIT400* platform.

## In this chapter

---

- Troubleshooting *eBIT400*
- Troubleshooting spools transmission

## Troubleshooting eBIT400

With this document we will try to create a methodology for detecting and solving problems in **eBit400** platform.

### IBM i diagnostics

#### 1.- ¿Documents status still in "Nuevo" all the time ?

Yes -- 2

No -- Perhaps communication between IBM i and server is too slow.

#### 2.- WRKACTJOB SBS(EBIT400). EBIT400 subsystem is ACTIVE?

Yes -- 3

No -- 100

#### 3.- WRKJOBQ JOBQ(\*ALL). Any eBit400 JOBQ is in hold status?

Yes -- Release it with option 6. Wait a minute and go point 1.

No -- 4

#### 4.- WRKACTJOB SBS(EBIT400). "EBIT\_MAIN" job is running?

Yes -- 5

No -- 90

#### 5.- WRKACTJOB SBS(EBIT400). Some jobs in eBIT400 subsystem are in "MSGW" status ?

Yes - Select job with option 7 and review error. Contact with hot line support in Bit ON Consultores, S.L. by Fax (933 569 658) or by eMail a [SOPORTE@BITON.ES](mailto:SOPORTE@BITON.ES)

No - 6

#### 6.- ¿ Documents (fax,eMail, SMS, Archive...) status is always "No Enviado" ?

Yes -- Select "more information" and review which is the problem. 10.

No - Status is always "Enviándose". Go point 7

#### 7.- Document "en proceso" or "Enviándose".

Yes -- Normally is:

- Verify EBIT400 subsystem is running and check if there is "EBIT\_MAIN\_" jobs. If not, go point 90. If yes, go point 12.
- Server is stopped or some service not started. Go point 11.

#### 9.- Document "NO ENVIADO" status. Document has been accepted by the server ?

Yes - Reason can be:

- (fax) Recipient is busy and after retries has not been possible to send the fax.
- (fax) There is not fax line in the server.
- Fax number its not correct.
- (eMail) SMTP server its not working properly.
- End

No -- 10. Internal application error. Contact with hot line support in Bit ON Consultores, S.L. by Fax (933 569 658) or by eMail a [SOPORTE@BITON.ES](mailto:SOPORTE@BITON.ES) . End.

#### 10.- Verify communication between iSeries and server using PING RMTSYS('server\_ip') command ¿There is answer ?

Yes -- Go point 11

No - Check that server is running

**11.- Check services in server.**

Open SERVICES management console (services.msc) and verify that services with name "Esker \*\*" are running.

If not, try to start it: it can take several minutes in function of server load.

If appears any kind of error during service start, contact with hot line support in Bit ON Consultores, S.L. End.

**12- Check fax lines (in case of fax transmission problems).**

Open Esker Administration console and verify if fax lines are ready. Go to point 90.

**90.- ENDSBS EBIT/EBIT400. Ends eBIT400 subsystem.**

After to stop subsystem, go point 100.

**100.-STRSBS EBIT/EBIT400. Start eBIT400 subsystem.**

Go point 1



**Troubleshooting spool transmission.****1.- OUTQ Spools are not processed by eBIT400 ?**

Yes -- 2

No -- 4

**2.- ¿La(s) OUTQ(s) está(n) Retenida(s) ?**

Yes -- 3

No -- 4

**3.- RLSOUTQ \*lib/outq**

Go to point 2.

**4.- WRKACTJOB SBS(EBIT400). "EBIT\_SPL" job is running in EBIT400 subsystem?**

Yes -- 5

No -- 9

**5.- WRKACTJOB SBS(EBIT400). Some jobs in eBIT400 subsystem are in "MSGW" status ?**Yes - Select job with option 7 and review error. Contact with hot line support in Bit ON Consultores, S.L. by Fax (933 569 658) or by eMail a [SOPORTE@BITON.ES](mailto:SOPORTE@BITON.ES). Fin.

No -- 7

**7.- WRKACTJOB SBS(EBIT400). Is running EBIT400 subsystem ?**

Yes -- 8

No -- 9

**9.- ENDSBS eBIT400. Ends EBIT400 subsystem.**

After to stop subsystem, go point 10.

**10.-STRSBS EBIT/EBIT400. Start EBIT400 subsystem.**

Go to point 1